

# ITEM CODE LIST



 **ZERO  
DEFECT**<sup>\*™</sup>  
\*Zero defect manufacturing process

# THE JOURNEY

1987

- Mr. Jayant Chheda commenced manufacturing unit of PVC Products.
- 1st PVC Fittings Manufacturing unit initiated to provide total piping solution.

1995

Manufacturing unit at Athal (Silvassa - D & N.H) was established to set-up a large scale Injection Moulding unit which marked the beginning for Prince Pipes to be one of the market leaders in PVC Fittings.

1998

ISO Certification earned by ensuring compliances to every step of quality management system.

2000

Manufacturing unit at Dadra (Silvassa - D & N.H) was established to augment the pipe manufacturing capacity by setting up a new extrusion unit.

2005

Prince Pipes achieved the benchmark of ₹100 Crore.

2008

Manufacturing unit at Haridwar (Uttarakhand) was established to cater to the increasing demand for Prince Pipes products.

2010

- Winner of BEST SME “EMERGING INDIA AWARDS 2010” by ICICI Bank, CNBC TV 18 & CRISIL.
- Winner of “OUTSTANDING QUALITY Contribution in Pipes Sector” by Bloomberg EPC world.

2012

Prince Pipes acquired “**Trubore**”, a renowned brand of southern India from Chemplast Sanmar Group along with their two manufacturing units at Kolhapur & Chennai.

2014

Received “Asia’s Most Promising Brand Award” by World Consulting and Research Corporation Delhi .

2015

- Mr. Jayant Chheda received the “Life time Achievement Award” at Vinyl India Conference.
- “IMEA Award” for Haridwar factory by Frost & Sullivan.

2016

Mr. Parag Chheda received Inspiring Business Leader Award by Economic Times.

2017

- Prince Pipes became a Public Limited Company.
- Economic Times Polymers Award (Excellence in Plastics) for excellence in building and construction (plumbing) in the large enterprises category.

2018

Prince Pipes announces bollywood actor **Akshay Kumar** as its brand ambassador.

# VISIONARY DIRECTORS



## COMPANY OVERVIEW

We made our foray into piping systems nearly three decades ago. With our experience, we have also embraced modern techniques to become one of the leading organizations in PVC industry. Our innovations in manufacturing pipes and fittings for industrial and domestic applications are known for their high functionality and special features. Our philosophy of **“Every Drop Saved is a Life Saved”** has driven us to become pioneers in the agricultural fittings segment. A strong dealer network enables us to service customers throughout the cities, towns and villages of India.

Times have changed, and so have we. Our commitment towards our values and brand promise has remained the same inspite of accepting modern engineering techniques.

## VISION

To be the acknowledged leader in the Indian plastic piping industry by exceeding customers' expectations and maximizing bottomline for all our stake holders.

## MISSION

Our mission is to bring a revolution in plastic piping industry through innovative solutions which would create a profitable growth and benefit our customers & society at large.

# MANUFACTURING UNITS

State of the art manufacturing units

## ATHAL

(SILVASSA) YEAR OF EST. 1995



## DADRA

(SILVASSA) YEAR OF EST. 2000



## HARIDWAR

(UTTARAKHAND) YEAR OF EST. 2008



## CHENNAI

(TAMIL NADU) YEAR OF EST. 2012



## KOLHAPUR

(MAHARASHTRA) YEAR OF EST. 2012



## JAIPUR

(RAJASTHAN)



## SANGAREDDY

(TELANGANA)



# INDEX

Page No.

## PLUMBING SYSTEMS

<b>Easyfit</b> - UPVC Plumbing Systems	1
<b>Smartfit</b> - CPVC Plumbing Systems	7
<b>Greenfit</b> - PPR Plumbing Systems	13

## SWR SYSTEMS

<b>Silentfit</b> - Low Noise SWR Piping Systems	19
<b>Ultrafit</b> - SWR Piping Systems	23

## DRAINAGE SYSTEMS

<b>Foamfit</b> - Underground Drainage Pipes	33
<b>Drainfit</b> - UPVC Underground Drainage Pipes	36
<b>Corfit</b> - Underground Double Wall Corrugated Pipes	38

## AGRI & BOREWELL SYSTEMS

<b>Aquafit</b> - Agriculture Piping Systems	39
<b>Safefit</b> - Borewell Systems	49

## ROOFWATER SYSTEMS

<b>Rainfit</b> - Roofwater Systems	52
------------------------------------	----

## OTHER PRODUCTS

<b>Durafit</b> - FRP Manhole & Chamber Covers	55
<b>Prestige Pipes</b> - Non Pressure Pipes	57

# EASYFIT®

UPVC Plumbing Systems  
Lead Free Pipes



Easyfit UPVC plumbing system is a “**LEAD FREE**” solvent weld system designed for distribution of potable water. This system is technically superior and offers many advantages over conventional G.I. piping system. It is easy to install and offers a long service life. It is mainly used for cold water application in residential, commercial and public complexes.



# Lead free pipes only.

- **Pipes** - Schedule 40 & 80 - As per ASTM D - 1785 (Plain Ended).
- **Fittings** - Schedule 40 as per ASTM D - 2466; Schedule 80 as per ASTM D - 2467.

## Pipes

HSN Code: 3917



### Pipes (Sch 40 - 3 mtr)

Size in inch	Size in mm	Std. Packaging	Item Code	
			Plain	Threaded
1/2	15	60	IM200994	IM201030
3/4	20	44	IM200995	IM201031
1	25	30	IM200996	IM201032
1 1/4	32	24	IM200997	IM201033
1 1/2	40	20	IM200998	IM201034
2	50	14	IM200999	IM201035
2 1/2	65	9	IM201018	IM201036
3	80	7	IM201019	IM201037
4	100	5	IM201020	IM201038
6	150	2	IM201067	-
8	200	1	IM204043	-
10	250	1	IM203791	-

### Pipes (Sch 40 - 6 mtr)

Size in inch	Size in mm	Std. Packaging	Item Code	
			Plain	Threaded
1/2	15	30	IM201007	IM201039
3/4	20	24	IM201009	IM201040
1	25	16	IM201008	IM201041
1 1/4	32	12	IM201006	IM201042
1 1/2	40	10	IM201016	IM201043
2	50	8	IM201017	IM201044
2 1/2	65	4	IM201024	IM201045
3	80	3	IM201025	IM201046
4	100	2	IM201026	IM201047
6	150	1	IM201068	-
8	200	1	IM204054	-

### Pipes (Sch 80 - 3 mtr)

Size in inch	Size in mm	Std. Packaging	Item Code	
			Plain	Threaded
1/2	15	50	IM201000	IM201048
3/4	20	36	IM201001	IM201049
1	25	26	IM201002	IM201050
1 1/4	32	18	IM201003	IM201051
1 1/2	40	14	IM201004	IM201052
2	50	10	IM201005	IM201053
2 1/2	65	8	IM201021	IM201054
3	80	6	IM201022	IM201055
4	100	4	IM201023	IM201056
6	150	2	IM201066	-
8	200	1	IM204042	-
10	250	1	-	-

### Pipes (Sch 80 - 6 mtr)

Size in inch	Size in mm	Std. Packaging	Item Code	
			Plain	Threaded
1/2	15	26	IM201010	IM201057
3/4	20	18	IM201011	IM201058
1	25	14	IM201012	IM201059
1 1/4	32	10	IM201013	IM201060
1 1/2	40	8	IM201014	IM201061
2	50	6	IM201015	IM201062
2 1/2	65	4	IM201027	IM201063
3	80	3	IM201028	IM201064
4	100	2	IM201029	IM201065
6	150	1	IM202824	-
8	200	1	IM204093	-

## Fittings

HSN Code: 3917



### Coupler (Sch 80)

Size in inch	Size in mm	Std. Packaging	Item Code
1/2	15	900	IM100821
3/4	20	500	IM100822
1	25	400	IM100817
1 1/4	32	240	IM100819
1 1/2	40	150	IM100820
2	50	110	IM100818
2 1/2	65	60	IM100949
3	80	40	IM100950
4	100	25	IM100951



### Coupler (Sch 40)

Size in inch	Size in mm	Std. Packaging	Item Code
1/2	15	900	IM101011
3/4	20	500	IM101012
1	25	400	IM101013
1 1/4	32	250	IM101014
1 1/2	40	175	IM101015
2	50	150	IM101016
6	150	5	IM104197



Elbow (Sch 80)			
Size in inch	Size in mm	Std. Packaging	Item Code
1/2	15	600	IM100826
3/4	20	400	IM100828
1	25	275	IM100823
1 1/4	32	100	IM100825
1 1/2	40	100	IM100827
2	50	75	IM100824
2 1/2	65	35	IM100953
3	80	25	IM100952
4	100	15	IM100954



Union (Sch 80)			
Size in inch	Size in mm	Std. Packaging	Item Code
1/2	15	200	IM100868
3/4	20	150	IM100869
1	25	125	IM100867
1 1/4	32	100	IM100866
1 1/2	40	50	IM100865
2	50	50	IM100870



Elbow (Sch 40)			
Size in inch	Size in mm	Std. Packaging	Item Code
1/2	15	900	IM101017
3/4	20	400	IM101018
1	25	250	IM101019
1 1/4	32	150	IM101020
1 1/2	40	110	IM101021
2	50	63	IM101022
6	150	4	IM104201



End Cap (Sch 80)			
Size in inch	Size in mm	Std. Packaging	Item Code
1/2	15	1200	IM100856
3/4	20	850	IM100857
1	25	500	IM100829
1 1/4	32	320	IM100902
1 1/2	40	240	IM100903
2	50	160	IM100904
2 1/2	65	75	IM100967
3	80	60	IM100968
4	100	30	IM100969



Elbow 45° (Sch 80)			
Size in inch	Size in mm	Std. Packaging	Item Code
1/2	15	450	IM100982
3/4	20	425	IM100983
1	25	260	IM100984
1 1/4	32	90	IM100985
1 1/2	40	75	IM100986
2	50	60	IM100987



End Cap (Sch 40)			
Size in inch	Size in mm	Std. Packaging	Item Code
6	150	10	IM104198



Equal Tee (Sch 80)			
Size in inch	Size in mm	Std. Packaging	Item Code
1/2	15	500	IM100850
3/4	20	320	IM100852
1	25	175	IM100847
1 1/4	32	75	IM100849
1 1/2	40	60	IM100848
2	50	40	IM100851
2 1/2	65	28	IM100958
3	80	20	IM100959
4	100	8	IM100960



Four Way Tee (Sch 80)			
Size in inch	Size in mm	Std. Packaging	Item Code
1/2	15	200	IM100988



Equal Tee (Sch 40)			
Size in inch	Size in mm	Std. Packaging	Item Code
1/2	15	400	IM101023
3/4	20	300	IM101024
1	25	175	IM101025
1 1/4	32	110	IM101026
1 1/2	40	75	IM101027
2	50	60	IM101028
6	150	2	IM104202



M. T. A (Sch 80)			
Size in inch	Size in mm	Std. Packaging	Item Code
1/2	15	1150	IM100834
3/4	20	720	IM100835
1	25	450	IM100910
1 1/4	32	260	IM100914
1 1/2	40	200	IM100915
2	50	140	IM100912
2 1/2	65	60	IM100957
3	80	45	IM100955
4	100	30	IM100956





F. T. A (Sch 80)			
Size in inch	Size in mm	Std. Packaging	Item Code
1/2	15	800	IM100858
3/4	20	650	IM100859
1	25	400	IM100913
1 1/4	32	250	IM100916
1 1/2	40	150	IM100917
2	50	120	IM100911
2 1/2	65	60	IM100964
3	80	40	IM100965
4	100	20	IM100966



Flange With Socket (1pc) (Sch 80)			
Size in inch	Size in mm	Std. Packaging	Item Code
1	25	60	IM103781
1 1/4	32	50	IM103783
1 1/2	40	40	IM103784
2	50	30	IM103782
2 1/2	65	20	IM103785
3	80	15	IM103786
4	100	10	IM103787



End Plug (Sch 80)			
Size in inch	Size in mm	Std. Packaging	Item Code
1/2	15	2000	IM100831
3/4	20	1200	IM100833
1	25	1100	IM100830
1 1/4	32	600	IM100832
1 1/2	40	500	IM100881



Blind Flange (1pc) (Sch 80)			
Size in inch	Size in mm	Std. Packaging	Item Code
2 1/2	65	20	IM104352
4	100	12	IM104353



Extended End Plug (Sch 80)			
Size in inch	Size in mm	Std. Packaging	Item Code
1/2	15	1000	IM101103
3/4	20	800	IM101104



Reducer (Sch 80)		
Size in inch	Std. Packaging	Item Code
3/4 X 1/2	550	IM100872
1 X 1/2	450	IM100909
1 X 3/4	400	IM100901
1 1/4 X 1	250	IM100855
1 1/2 X 1	200	IM100854
1 1/2 X 1 1/4	150	IM100853
2 X 1	150	IM100860
2 X 1 1/4	130	IM100840
2 X 1 1/2	125	IM100839
2 1/2 X 2	45	IM100970
3 X 2	45	IM100971
3 X 2 1/2	40	IM100972
4 X 2	25	IM100973
4 X 2 1/2	25	IM100974
4 X 3	22	IM100975



Pipe Clip (Sch 80)			
Size in inch	Size in mm	Std. Packaging	Item Code
1/2	15	1200	IM101096
3/4	20	1100	IM101097
1	25	1050	IM101098
1 1/4	32	900	IM101099
1 1/2	40	500	IM101100
2	50	200	IM101101



Tank Connector (Sch 80)			
Size in inch	Size in mm	Std. Packaging	Item Code
1/2	15	260	IM100768
3/4	20	200	IM100769
1	25	125	IM100770
1 1/4	32	70	IM100773
1 1/2	40	60	IM100772
2	50	35	IM100771



Reducing Bush (Sch 80)		
Size in inch	Std. Packaging	Item Code
3/4 X 1/2	1500	IM100873
1 X 1/2	800	IM100874
1 X 3/4	800	IM100875
1 1/4 X 1/2	450	IM100931
1 1/4 X 3/4	475	IM100932
1 1/4 X 1	500	IM100876
1 1/2 X 1/2	250	IM100929
1 1/2 X 3/4	280	IM100930
1 1/2 X 1	300	IM100877
1 1/2 X 1 1/4	400	IM100878
2 X 1/2	190	IM100926
2 X 3/4	200	IM100927
2 X 1	225	IM100928
2 X 1 1/4	250	IM100935
2 X 1 1/2	240	IM100948



Tank Connector (Short Body) (Sch 80)			
Size in inch	Size in mm	Std. Packaging	Item Code
1/2	15	250	IM101003
3/4	20	200	IM101004
1	25	150	IM101005
1 1/4	32	100	IM101006
1 1/2	40	75	IM101007
2	50	50	IM101008



Reducing Bush (Sch 40)		
Size in inch	Std. Packaging	Item Code
6 X 3	10	IM104199
6 X 4	10	IM104200



Threaded Tee (Sch 80)			
Size in inch	Size in mm	Std. Packaging	Item Code
1/2	15	450	IM100942
3/4 X 1/2	20 X 15	280	IM100941
3/4	20	240	IM100940
1 X 1/2	25 X 15	190	IM100938
1 X 3/4	25 X 20	180	IM100939
1	25	160	IM100937



Reducing Tee (Sch 80)		
Size in inch	Std. Packaging	Item Code
3/4 X 1/2	300	IM100846
1 X 1/2	200	IM100841
1 X 3/4	200	IM100842
1 1/4 X 1/2	125	IM100990
1 1/4 X 3/4	-	IM103256
1 1/4 X 1	120	IM100900
1 1/2 X 1/2	90	IM100861
1 1/2 X 3/4	90	IM100862
1 1/2 X 1	90	IM100864
1 1/2 X 1 1/4	80	IM100863
2 X 1/2	50	IM101010
2 X 3/4	50	IM101009
2 X 1	50	IM100845
2 X 1 1/4	40	IM100844
2 X 1 1/2	40	IM100843
2 1/2 X 2	30	IM100976
3 X 2	16	IM100977
3 X 2 1/2	16	IM100978
4 X 2	8	IM100979
4 X 2 1/2	8	IM100980
4 X 3	8	IM100981



Cross Over (Sch 40)			
Size in inch	Size in mm	Std. Packaging	Item Code
1/2	15	60	IM100601
3/4	20	50	IM100602
1	25	30	IM100603



Bend 90°			
Size in inch	Size in mm	Std. Packaging	Item Code
1/2	15	400	IM100595
3/4	20	250	IM100596
1	25	100	IM100597
1 1/4	32	70	IM100598
1 1/2	40	50	IM100599
2	50	36	IM100600



Red. Female Threaded Adaptor (Sch 80)		
Size in inch	Std. Packaging	Item Code
3/4 X 1/2	650	IM100922

## Brass Insert Fittings

HSN Code: 3917



Reducing Elbow (Sch 80)		
Size in inch	Std. Packaging	Item Code
3/4 X 1/2	400	IM100963
1 X 1/2	275	IM100961
1 X 3/4	250	IM100962



M. T. A (Sch 80)			
Size in inch	Size in mm	Std. Packaging	Item Code
1/2	15	300	IM100784
3/4 X 1/2	20 X 15	225	IM100814
3/4	20	175	IM100785
1	25	125	IM100786
1 1/4	32	75	IM102523
1 1/2	40	70	IM102524
2	50	40	IM100816



Threaded Elbow (Sch 80)			
Size in inch	Size in mm	Std. Packaging	Item Code
1/2	15	600	IM100943
3/4	20	400	IM100944
3/4 x 1/2	20 X 15	350	IM100945
1	25	250	IM100946
1 x 3/4	25 X 15	200	IM100947



Male Threaded Elbow (Sch 80)			
Size in inch	Size in mm	Std. Packaging	Item Code
1/2	15	175	IM100778
3/4	20	125	IM100779
3/4 X 1/2	20 X 15	175	IM100782
1	25	60	IM100805
1 X 1/2	25 X 15	100	IM100812
1 X 3/4	25 X 20	80	IM100803



Male Threaded Tee (Sch 80)			
Size in inch	Size in mm	Std. Packaging	Item Code
1/2	15	175	IM100780
3/4	20	125	IM100793
3/4 X 1/2	20 X 15	150	IM100783
1	25	45	IM100807
1 X 1/2	25 X 15	90	IM100800
1 X 3/4	25 X 20	80	IM100798



Ball Valves (Sch 80) HSN Code: 8481			
Size in inch	Size in mm	Std. Packaging	Item Code
1/2	15	200	IT100079
3/4	20	120	IT100080
1	25	84	IT100081
1 1/4	32	56	IT100082
1 1/2	40	36	IT100083
2	50	24	IT100084



F. T. A (Sch 80)			
Size in inch	Size in mm	Std. Packaging	Item Code
1/2	15	350	IM100788
3/4 X 1/2	20 X 15	300	IM100795
3/4	20	230	IM100789
1	40	150	IM100790
1 X 1/2	25 X 15	250	IM100796
1 X 3/4	25 X 20	150	IM100797
1 1/4	32	100	IM102525
1 1/2	40	50	IM102526
2	50	30	IM100815

## Solvent Cements

HSN Code: 3506



Tin		
Size in ml	Std. Packaging	Item Code
50ml	360	IM101737
100ml	144	IM101738
250ml	96	IM101729
500ml	48	IM101735
1Ltr	24	IM101736



Female Threaded Elbow (Sch 80)			
Size in inch	Size in mm	Std. Packaging	Item Code
1/2	15	350	IM100777
3/4	20	175	IM100794
3/4 X 1/2	20 X 15	250	IM100781
1	25	75	IM100806
1 X 1/2	25 X 15	110	IM100813
1 X 3/4	25 X 20	100	IM100804
1 1/4	32	50	IM100802



Tube		
Size in ml	Std. Packaging	Item Code
25ml	384	IM101726
50ml	256	IM101727



Female Threaded Tee (Sch 80)			
Size in inch	Size in mm	Std. Packaging	Item Code
1/2	15	250	IM100776
3/4	20	150	IM100792
3/4 X 1/2	20 X 15	175	IM100775
1	25	75	IM100808
1 X 1/2	25 X 15	125	IM100801
1 X 3/4	25 X 20	90	IM100799



Plastic Strip P.T.F.E Tape		
Size in mm	Std. Packaging	Item Code
12mm X 10 mtr	1000	IT100090



Female Threaded Bush (Sch 80)			
Size in inch	Size in mm	Std. Packaging	Item Code
1 X 1/2	25 X 20	300	IM100811

# SMARTFIT<sup>®</sup>

## CPVC Plumbing Systems for Hot and Cold Water



Smartfit CPVC plumbing system is designed for Hot and Cold water which is suitable for all plumbing and potable water application. It has a proven Hot and Cold water performance from 0°C to 93°C. Its corrosion resistance property makes it usable in all weather & ensures constant flow over lifetime. This system is used in industrial, residential, commercial and public complexes.

Pipes as per  
IS: 15778



(SDR 11 and 13.5)

ASTM F 441  
(SCH 40 and 80)

**Fittings as per**  
ASTM D 2846 (SDR 11)

ASTM F 439 (SCH 80)

## Pipes

HSN Code: 3917



### Pipes (3 mtr)

Size in inch	Size in mm	Std. Packaging	SDR 11	SDR 13.5
			Item Code	Item Code
1/2	15	140	IM201444	IM201456
3/4	20	80	IM201445	IM201457
1	25	50	IM201446	IM201458
1 1/4	32	36	IM201447	IM201459
1 1/2	40	24	IM201448	IM201460
2	50	16	IM201449	IM201461

### Pipes (5 mtr)

Size in inch	Size in mm	Std. Packaging	SDR 11	SDR 13.5
			Item Code	Item Code
1/2	15	80	IM201450	IM201462
3/4	20	50	IM201451	IM201463
1	25	30	IM201452	IM201464
1 1/4	32	20	IM201453	IM201465
1 1/2	40	14	IM201454	IM201466
2	50	8	IM201455	IM201467

### Pipes (3 mtr)

Size in inch	Size in mm	Std. Packaging		SCH 40	SCH 80
		40	80	Item Code	Item Code
2 1/2	65	8	6	IM201469	IM201472
3	80	5	4	IM201470	IM201473
4	100	3	3	IM201471	IM201474
6	-	1	1	IM203091	IM202966
8	200	-	-	-	-
10	250	-	-	IM203728	IM203729

### Pipes (5 mtr)

Size in inch	Size in mm	Std. Packaging	SCH 40	SCH 80
			Item Code	Item Code
2 1/2	65	4	IM201475	IM201478
3	80	3	IM201476	IM201479
4	100	2	IM201477	IM201480

## Fittings

HSN Code: 3917



### Coupler

Size in inch	Size in mm	Std. Packaging	Item Code
1/2	15	1000	IM101538
3/4	20	500	IM101539
1	25	350	IM101540
1 1/4	32	200	IM101541
1 1/2	40	150	IM101542
2	50	75	IM101543
2 1/2	65	30	IM101676
3	80	20	IM101677
4	100	12	IM101678



### Elbow

Size in inch	Size in mm	Std. Packaging	Item Code
1/2	15	600	IM101544
3/4	20	400	IM101545
1	25	225	IM101546
1 1/4	32	100	IM101547
1 1/2	40	80	IM101548
2	50	50	IM101549
2 1/2	65	20	IM101679
3	80	12	IM101680
4	100	8	IM101681



Elbow 45°			
Size in inch	Size in mm	Std. Packaging	Item Code
1/2	15	1000	IM101625
3/4	20	400	IM101626
1	25	250	IM101627
1 1/4	32	175	IM101643
1 1/2	40	100	IM101644
2	50	60	IM101645



Cross Over			
Size in inch	Size in mm	Std. Packaging	Item Code
1/2	15	80	IM101535
3/4	20	100	IM101536
1	25	70	IM101537



Tee			
Size in inch	Size in mm	Std. Packaging	Item Code
1/2	15	500	IM101550
3/4	20	250	IM101551
1	25	175	IM101552
1 1/4	32	75	IM101553
1 1/2	40	60	IM101554
2	50	35	IM101555
2 1/2	65	15	IM101691
3	80	10	IM101692
4	100	4	IM101693

Fab. Bend			
Size in inch	Size in mm	Std. Packaging	Item Code
1/2	15	400	IM104117
3/4	20	250	IM104118
1	25	100	IM104119
1 1/4	32	70	IM104120
1 1/2	40	50	IM104121
2	50	36	IM104122



Union			
Size in inch	Size in mm	Std. Packaging	Item Code
1/2	15	250	IM101629
3/4	20	150	IM101630
1	25	125	IM101631
1 1/4	32	75	IM101646
1 1/2	40	40	IM101647
2	50	30	IM101648

M. T. A			
Size in inch	Size in mm	Std. Packaging	Item Code
1/2	15	1200	IM101562
3/4	20	900	IM101563
1	25	450	IM101564
1 1/4	32	250	IM101565
1 1/2	40	200	IM101566
2	50	100	IM101567
2 1/2	65	40	IM101688
3	80	30	IM101689
4	100	18	IM101690



End Cap			
Size in inch	Size in mm	Std. Packaging	Item Code
1/2	15	1100	IM101556
3/4	20	900	IM101557
1	25	500	IM101558
1 1/4	32	300	IM101559
1 1/2	40	200	IM101560
2	50	150	IM101561
2 1/2	65	50	IM101682
3	80	40	IM101683
4	100	20	IM101684



F. T. A			
Size in inch	Size in mm	Std. Packaging	Item Code
1/2	15	800	IM101568
3/4	20	700	IM101569
1	25	400	IM101570
1 1/4	32	200	IM101571
1 1/2	40	150	IM101572
2	50	80	IM101573
2 1/2	65	40	IM101685
3	80	25	IM101686
4	100	15	IM101687



Four Way Tee			
Size in inch	Size in mm	Std. Packaging	Item Code
1/2	15	500	IM101621
3/4	20	225	IM101622



Tank Connector			
Size in inch	Size in mm	Std. Packaging	Item Code
1/2	15	150	IM101672
3/4	20	125	IM101673
1	25	90	IM101662
1 1/4	32	60	IM101663
1 1/2	40	50	IM101674
2	50	30	IM101675



Cross Over ( Moulded )			
Size in inch	Size in mm	Std. Packaging	Item Code
3/4	20	100	IM102962
1	25	70	IM102961

### Tank Connector Plain

Size in inch	Size in mm	Std. Packaging	Item Code
3/4	20	150	IM103252
1	25	100	IM103254

2 X 3/4	200	IM101600
2 X 1	225	IM101601
2 X 1 1/4	200	IM101602
2 X 1 1/2	200	IM101603



### Flange With Socket (1pc) (Sch 80)

Size in inch	Size in mm	Std. Packaging	Item Code
1	25	40	IM103775
1 1/4	32	30	IM103776
1 1/2	40	25	IM103777
2	50	20	IM103778
2 1/2	65	15	IM103779
3	80	12	IM104102
4	100	8	IM103780



### Reducing Tee

Size in inch	Std. Packaging	Item Code
3/4 X 1/2	300	IM101605
1 X 1/2	200	IM101606
1 X 3/4	200	IM101607
1 1/4 X 1/2	100	IM101608
1 1/4 X 3/4	100	IM101609
1 1/4 X 1	100	IM101610
1 1/2 X 1/2	80	IM101611
1 1/2 X 3/4	75	IM101612
1 1/2 X 1	75	IM101613
1 1/2 X 1 1/4	60	IM101614
2 X 1/2	50	IM101615
2 X 3/4	50	IM101616
2 X 1	50	IM101617
2 X 1 1/4	40	IM101618
2 X 1 1/2	40	IM101619



### Blind Flange (1pc) (Sch 80)

Size in inch	Size in mm	Std. Packaging	Item Code
2 1/2	65	16	IM104348
4	100	10	IM104349



### Reducer

Size in inch	Std. Packaging	Item Code
3/4 X 1/2	550	IM101574
1 X 1/2	450	IM101575
1 X 3/4	400	IM101576
1 1/4 X 1/2	250	IM101577
1 1/4 X 3/4	250	IM101578
1 1/4 X 1	250	IM101579
1 1/2 X 1/2	200	IM101580
1 1/2 X 3/4	200	IM101581
1 1/2 X 1	200	IM101582
1 1/2 X 1 1/4	150	IM101583
2 X 1/2	150	IM101584
2 X 3/4	150	IM101585
2 X 1	150	IM101586
2 X 1 1/4	140	IM101587
2 X 1 1/2	100	IM101588



### Reducing M.T.A.

Size in inch	Std. Packaging	Item Code
3/4 X 1/2	625	IM101628

### Reducing F.T.A.

Size in inch	Std. Packaging	Item Code
3/4 X 1/2	-	IM104434



### Reducing Elbow

Size in inch	Std. Packaging	Item Code
3/4 X 1/2	400	IM101604
1 X 3/4	200	IM102913



### Reducing Bush

Size in inch	Std. Packaging	Item Code
3/4 X 1/2	1000	IM101589
1 X 1/2	700	IM101590
1 X 3/4	800	IM101591
1 1/4 X 1/2	450	IM101592
1 1/4 X 3/4	475	IM101593
1 1/4 X 1	500	IM101594
1 1/2 X 1/2	250	IM101595
1 1/2 X 3/4	280	IM101596
1 1/2 X 1	300	IM101597
1 1/2 X 1 1/4	400	IM101598
2 X 1/2	190	IM101599



### Transition Bush

Size in inch	Std. Packaging	Item Code
1/2 X 1/2	1000	IM101623
3/4 X 3/4	750	IM101624

## Brass Insert Fittings

**HSN Code: 3917**



### M. T. A (Heavy)

Size in inch	Size in mm	Std. Packaging	Item Code
1/2	15	200	IM102511
3/4	20	170	IM102512
3/4 X 1/2	20 X 15	190	IM102767
1	25	85	IM102513
1 1/4	32	35	IM102514
1 1/2	40	25	IM102515
2	50	15	IM102516



### F. T. Elbow

Size in inch	Size in mm	Std. Packaging	Item Code
1/2	15	300	IM101703
3/4	20	175	IM101704
3/4 X 1/2	20 X 15	250	IM101705
1	25	150	IM101709
1 X 1/2	25 X 15	225	IM101710
1 X 3/4	25 X 20	150	IM101723
1 1/4	32	60	IM101712



### M. T. A

Size in inch	Size in mm	Std. Packaging	Item Code
1/2	15	300	IM101694
3/4	20	175	IM101695
3/4 X 1/2	20 X 15	175	IM101696
1	25	125	IM101697
1 X 3/4	25 X 20	100	IM101721
1 X 1/2	25 X 15	150	IM104212
1 1/4	32	50	IM101715
1 1/2	40	35	IM101717
2	50	20	IM101719

### F. T. Elbow (Extended)

Size in inch	Size in mm	Std. Packaging	Item Code
1/2	15	125	IM103751
3/4 X 1/2	20 X 15	100	IM103763

### Extended End Plug

Size in inch	Size in mm	Std. Packaging	Item Code
1/2	15	500	IT100721



### F. T. A (Heavy)

Size in inch	Size in mm	Std. Packaging	Item Code
1/2	15	200	IM102517
3/4	20	150	IM102518
1	25	70	IM102519
1 1/4	32	40	IM102520
1 1/2	40	30	IM102521
2	50	20	IM102522



### F. T. Tee

Size in inch	Size in mm	Std. Packaging	Item Code
1/2	15	250	IM101706
3/4	20	150	IM101724
3/4 X 1/2	20 X 15	175	IM101707
1 X 1/2	25 X 15	175	IM101708
1 X 3/4	25 X 20	150	IM101722
1	25	-	IM104211
1 1/4	32	60	IM101713



### F. T. A

Size in inch	Size in mm	Std. Packaging	Item Code
1/2	15	350	IM101698
3/4	20	300	IM101699
3/4 X 1/2	20 X 15	300	IM101700
1	25	150	IM101701
1 X 1/2	25 X 15	150	IM101702
1 X 3/4	25 X 20	125	IM101720
1 1/4	32	75	IM101714
1 1/2	40	45	IM101716
2	50	25	IM101718



### Ball Valves (Union Type) HSN Code: 8481

Size in inch	Size in mm	Std. Packaging	Item Code
1/2	15	60	IT100449
3/4	20	48	IT100450
1	25	48	IT100451
1 1/4	32	12	IT100452
1 1/2	40	8	IT100453
2	50	6	IT100454
2 1/2	65	8	IT100722
3	80	4	IT100723
4	100	3	IT100739

### Concealed Valve

Size in inch	Size in mm	Std. Packaging	Item Code
3/4	20	12	IT100743
1	25	12	IT100744







**Metal Clamp (Powder Coated)**  
**HSN Code: 7301**

Size in inch	Size in mm	Std. Packaging	Item Code
1/2	15	1000	IT100422
3/4	20	1000	IT100423
1	25	1000	IT100424
1 1/4	32	700	IT100425
1 1/2	40	600	IT100426
2	50	500	IT100427

**CPVC Solvent  
 Cement (Yellow)**

**HSN Code:  
 3506**



**Tube**

Size in ml	Std. Packaging	Item Code
29.5ml	384	IT100436
59ml	240	IT100437



**Tin**

Size in ml	Std. Packaging	Item Code
118ml	144	IT100438
237ml	96	IT100439
493ml	48	IT100440
946ml	24	IT100441

# GREENFIT®

## PPR Plumbing Systems for Extreme Temperatures



Greenfit PPR plumbing systems has superior characteristics to withstand working temperatures upto 95°C along with excellent chemical resistance. It also provides a definite solution to oxidation and calcification. Therefore PPR is an ideal material for hot & cold water plumbing systems in buildings & industrial piping installation which ensures high quality performance.

Pipes as per  
IS: 15801



Fittings as per  
DIN 16962

# Pipes

HSN Code: 3917



PN 20		
Size in mm	Std. Packaging	Item Code
20	110	IM201321
25	60	IM201322
32	45	IM201323
40	30	IM201324
50	18	IM201325
63	8	IM201326
75	8	IM201369
90	5	IM201383
110	4	IM201375
160	1	-

Triple Layer - PN 20		
Size in mm	Std. Packaging	Item Code
20	86	IM201342
25	70	IM201343
32	40	IM201344
40	22	IM201345
50	14	IM201346
63	8	IM201347
75	8	IM201386
90	5	IM201391
110	4	IM201392
160	-	-

UV Resistant - PN 20 (Black)		
Size in mm	Std. Packaging	Item Code
20	86	IM201306
25	70	IM201307
32	40	IM201308
40	22	IM201309
50	14	IM201310
63	8	IM201311
75	-	-
90	-	-
110	-	-
160	-	-

PN 16		
Size in mm	Std. Packaging	Item Code
20	110	IM201315
25	75	IM201316
32	45	IM201317
40	26	IM201318
50	18	IM201319
63	12	IM201320
75	8	IM201362
90	5	IM201376
110	4	IM201370
160	1	IM201402

Triple Layer - PN 16		
Size in mm	Std. Packaging	Item Code
20	100	IM201336
25	70	IM201337
32	40	IM201338
40	26	IM201339
50	16	IM201340
63	10	IM201341
75	8	IM201371
90	4	IM201388
110	5	IM201387
160	-	IM201404

UV Resistant - PN 16 (Black)		
Size in mm	Std. Packaging	Item Code
20	110	IM201300
25	70	IM201301
32	40	IM201302
40	26	IM201303
50	16	IM201304
63	10	IM201305
75	5	IM201385
90	8	IM201381
110	-	IM201377
160	-	-

PN 10		
Size in mm	Std. Packaging	Item Code
20	110	IM201378
25	75	IM201379
32	45	IM201380
40	26	IM201312
50	16	IM201313
63	10	IM201314
75	8	IM201384
90	5	IM201382
110	4	IM201374
160	1	IM201401

Triple Layer - PN 10		
Size in mm	Std. Packaging	Item Code
20	110	-
25	75	-
32	45	IM201423
40	26	IM201333
50	16	IM201334
63	10	IM201335
75	8	IM201373
90	5	IM201389
110	4	IM201390
160	1	IM201403

UV Resistant - PN 10 (Black)		
Size in mm	Std. Packaging	Item Code
40	26	IM201297
50	16	IM201298
63	10	IM201299

3L Thermex - PN 20		
Size in mm	Std. Packaging	Item Code
20	86	IM201350
25	60	IM201351
32	36	IM201352
40	22	IM201353
50	14	IM201354
63	8	IM201355

3L Thermex - PN 16		
Size in mm	Std. Packaging	Item Code
20	100	IM201356
25	70	IM201357
32	40	IM201358
40	26	IM201359
50	16	IM201360
63	10	IM201361

3L Thermex - PN 10		
Size in mm	Std. Packaging	Item Code
40	26	-
50	16	-
63	10	-

## PPR Fittings

HSN Code: 3917



Coupler		
Size in mm	Std. Packaging	Item Code
20	600	IM101410
25	525	IM101411
32	280	IM101412
40	160	IM101413
50	80	IM101414
63	42	IM101415
75	30	IM101504
90	18	IM101505
110	10	IM101506
160	4	IT100282



Plain Union		
Size in mm	Std. Packaging	Item Code
20	250	IM101458
25	150	IM101459
32	120	IM101460
40	60	IM102953
50	40	IM102957
63	25	IT100355



Elbow 90°		
Size in mm	Std. Packaging	Item Code
20	560	IM101416
25	350	IM101417
32	210	IM101418
40	105	IM101419
50	56	IM101420
63	28	IM101421
75	14	IM101507
90	8	IM101508
110	6	IM101509
160	2	IT100286



End Plug		
Size in mm	Std. Packaging	Item Code
20	800	IM101455
25	300	IM101456
32	200	IM101457



End Plug ( Extended )		
Size in mm	Std. Packaging	Item Code
20	600	IM101483
25	540	IM101484



Elbow 45°		
Size in mm	Std. Packaging	Item Code
20	150	IT100185
25	100	IT100186
32	60	IT100187
40	60	IT100188
50	40	IT100189
63	24	IT100190
75	12	IT100351
90	14	IT100336
110	6	IT100347
160	3	IT100348



End Cap		
Size in mm	Std. Packaging	Item Code
20	500	IM101422
25	500	IM101423
32	250	IM101424
40	100	IM101425
50	100	IM101426
63	48	IM101471
75	30	IT100287
90	25	IT100288
110	20	IT100289
160	15	IT100290



Equal Tee		
Size in mm	Std. Packaging	Item Code
20	350	IM101427
25	200	IM101428
32	120	IM101429
40	70	IM101430
50	30	IM101431
63	18	IM101432
75	12	IM101510
90	8	IM101511
110	4	IM101512
160	2	IT100294



Pipe Clamp		
Size in mm	Std. Packaging	Item Code
20	1000	IM101407
25	800	IM101408
32	600	IM101409



Gate Valve		
Size in mm	Std. Packaging	Item Code
20	40	IM101522
25	40	IM101523
32	40	IM101524
40	30	IM101531
50	14	IM101532
63	14	IM101528



Ball Valve (Cold Water) HSN Code: 8481		
Size in mm	Std. Packaging	Item Code
20	200	IT100371
25	150	IT100372
32	100	IT100373
40	35	IT100374
50	50	IT100375
63	16	IT100376



Tank Connector		
Size in mm	Std. Packaging	Item Code
20	180	IM101351
25	100	IM101352
32	40	IM101353
40	30	IM101354
50	20	IM101355
63	15	IM101356



Ball Valve (Metal) HSN Code: 8481		
Size in mm	Std. Packaging	Item Code
20	200	IT100654
25	150	IT100655
32	100	IT100656
40	35	IT100657
50	50	IT100658



Tank Connector (Short)		
Size in mm	Std. Packaging	Item Code
25	200	IM102534
32	150	IM102535
40	100	IM102536
50	75	IM102537
63	50	IM102538



Cross Over		
Size in mm	Std. Packaging	Item Code
20	300	IM101347
25	210	IM101348
32	50	IM101349



Reducer		
Size in mm	Std. Packaging	Item Code
25 X 20	500	IM101436
32 X 25	250	IM101438
32 X 20	250	IM101437
40 X 32	200	IM101439
40 X 25	200	IM101474
40 X 20	150	IM101473
50 X 40	102	IM101440
50 X 32	100	IM101477
50 X 25	100	IM101476
50 X 20	100	IM101475
63 X 50	80	IM101496
63 X 40	80	IM101495
63 X 32	100	IM101494
63 X 25	100	IM101493
63 X 20	100	IM101492
75 X 63	20	IT100306
75 X 50	20	IT100305
75 X 40	20	IT100304
75 X 32	20	IT100303
90 X 75	15	IT100309
90 X 63	15	IT100308
90 X 50	15	IT100307
110 X 90	10	IT100312
110 X 75	10	IT100311
110 X 63	8	IT100310
160 X 110	8	IT100313



Four Way Tee		
Size in mm	Std. Packaging	Item Code
20	60	IM101433
25	50	IM101434
32	30	IT100219



Flange Core		
Size in mm	Std. Packaging	Item Code
32	300	IM103035
40	200	IM103036
50	125	IM103037
63	75	IM103038
75	50	IM103031
90	40	IM103032
110	25	IM103033
160	15	IM103034



Flange		
Size in mm	Std. Packaging	Item Code
32	60	IM103039
40	50	IM103040
50	40	IM103041
63	30	IM103042
75	25	IM103027
90	18	IM103028
110	16	IM103029
160	10	IM103030



Reducing Elbow		
Size in mm	Std. Packaging	Item Code
25 X 20	350	IM101441
32 X 25	180	IM101443
32 X 20	180	IM101442
40 X 32	105	IM101491
40 X 25	105	IM101444
40 X 20	105	IM101472
63 X 40	28	IM101445



Reducing Tee		
Size in mm	Std. Packaging	Item Code
25 X 20	200	IM101446
32 X 25	120	IM101448
32 X 20	120	IM101447
40 X 32	50	IM101451
40 X 25	60	IM101450
40 X 20	60	IM101449
50 X 40	30	IM101454
50 X 32	30	IM101453
50 X 25	36	IM101452
50 X 20	42	IM101470
63 X 50	18	IM101499
63 X 40	18	IM101490
63 X 32	18	IM101489
63 X 25	18	IM101498
63 X 20	18	IM101497
75 X 63	15	IM103015
75 X 50	15	IM103014
75 X 40	15	IM101513
75 X 32	15	IT100314
90 X 75	12	IM103017
90 X 63	12	IM101515
90 X 50	12	IM103016
90 X 40	12	IM101514
110 X 90	4	IM103021
110 X 75	4	IM103020
110 X 63	4	IM101516
110 X 50	4	IM103019
110 X 40	4	IM103018
160 X 110	4	IT100326



Male Threaded Tee		
Size in mm	Std. Packaging	Item Code
20 X 1/2"	100	IM101388
25 X 1/2"	100	IM101389
25 X 3/4"	100	IM101390
32 X 1/2"	90	IM101402
32 X 3/4"	40	IT100235
32 X 1"	40	IM101391



Male Threaded Union		
Size in mm	Std. Packaging	Item Code
20 X 1/2"	100	IT100236
25 X 3/4"	60	IT100237
32 X 1"	50	IT100238
40 X 1 1/4"	30	IT100239
50 X 1 1/2"	20	IT100240
63 X 2"	12	IT100241



Female Threaded Adaptor		
Size in mm	Std. Packaging	Item Code
20 X 1/2"	200	IM101360
20 X 3/4"	180	IM101361
25 X 1/2"	220	IM101362
25 X 3/4"	180	IM101363
32 X 3/4"	130	IM101364
32 X 1"	100	IM101365
40 X 1 1/4"	60	IM101366
50 X 1 1/2"	40	IM101395
63 X 2"	35	IM101399

## Brass Insert Fittings

HSN Code:  
3917



Male Threaded Adaptor		
Size in mm	Std. Packaging	Item Code
20 X 1/2"	170	IM101376
20 X 3/4"	100	IM101377
25 X 1/2"	170	IM101378
25 X 3/4"	130	IM101379
32 X 3/4"	100	IM101380
32 X 1"	80	IM101381
40 X 1 1/4"	40	IM101382
40 X 1 1/2"	40	IM101398
50 X 1 1/2"	40	IM101393
63 X 2"	28	IM101400



Female Threaded Elbow		
Size in mm	Std. Packaging	Item Code
20 X 1/2"	210	IM101367
20 X 3/4"	130	IM101368
25 X 1/2"	150	IM101369
25 X 3/4"	100	IM101370
32 X 1/2"	154	IM101403
32 X 1"	60	IM101371
40 X 1 1/4"	50	IM101392



Male Threaded Elbow		
Size in mm	Std. Packaging	Item Code
20 x 1/2"	120	IM101383
20 x 3/4"	100	IM101384
25 x 1/2"	100	IM101385
25 x 3/4"	60	IM101386
32 x 1/2"	132	IM101404
32 x 1"	50	IM101387
40 x 1 1/4"	40	IM101396



Female Threaded Elbow with Support		
Size in mm	Std. Packaging	Item Code
20 X 1/2"	150	IM101357
25 X 1/2"	140	IM101358
25 X 3/4"	120	IM101359



Female Threaded Tee		
Size in mm	Std. Packaging	Item Code
20 X 1/2"	180	IM101372
25 X 1/2"	150	IM101373
25 X 3/4"	130	IM101374
32 X 1/2"	110	IM101401
32 X 3/4"	50	IT100209
32 X 1"	60	IM101375



Repair Section HSN Code: 8515		
Size in mm	Std. Packaging	Item Code
7 X 11	-	IT100132



Female Threaded Union		
Size in mm	Std. Packaging	Item Code
20 X 1/2"	150	IT100211
25 X 3/4"	80	IT100212
32 X 1"	40	IT100213
40 X 1 1/4"	30	IT100214
50 X 1 1/2"	20	IT100215
63 X 2"	12	IT100216



Repair Bar HSN Code: 8515		
Size in mm	Std. Packaging	Item Code
7 X 11	-	IM101518



Welding Device HSN Code: 8468 (Kits) HSN Code: 4202 (Bag)		
Size in mm	Std. Packaging	Item Code
20 - 63	-	IT100125
75 - 110	-	IT100116

## Accessories



Die Set HSN HSN Code: 8515		
Size in mm	Std. Packaging	Item Code
20	-	IT100126
25	-	IT100127
32	-	IT100128
40	-	IT100129
50	-	IT100118
63	-	IT100119



Large Diameter Welding Device HSN Code: 8468 (Kits)		
Size in mm	Std. Packaging	Item Code
75 - 160	-	IT100121



Cutter HSN Code: 3917		
Size in mm	Std. Packaging	Item Code
20 - 40	-	IT100130
50 - 90	-	IT100110

**Now Available in Blue Color for Compressed Air Applications**



**NEW**

**BLUE GREENFIT®**

PP-R Plumbing Systems

Now going one step further, we have introduced Blue - Greenfit piping systems which is used in transportation of compressed air & vacuum lines. This system conforms to industry standards and is used in pneumatic applications.

# SILENTFIT<sup>®</sup>

Low Noise  
SWR Piping Systems



Silentfit Low Noise SWR Piping Systems are three layered pipes of which, outer and inner layers are made up of UPVC material and intermediate layer of specially formulated PVC material which serves as a noise insulator, providing silent operation when water flows through the system.





**Pipes**  
**HSN Code:**  
**3917**



**Rubber Ring Pipe - 3mtr (Single Socket)**

Size in mm	Std. Packaging	Item Code
75	-	IM202919
110	-	IM202920
160	-	IM202921

**Solvent Joint Pipe - 6mtr (Single Socket)**

Size in mm	Std. Packaging	Item Code
75	-	IM202913
110	-	IM202914
160	-	IM202915

**Solvent Joint Pipe - 3mtr (Single Socket)**

Size in mm	Std. Packaging	Item Code
40	-	IM204113
50	-	IM204114
63	-	IM204115
75	-	IM202916
110	-	IM202917
160	-	IM202918

**ISI - Rubber Ring Fittings**

**HSN Code: 3917**

**Coupler**

Size in mm	Std. Packaging	Item Code
75	84	IM104003
110	45	IM104004
160	-	IM104005

**Single Y**

Size in mm	Std. Packaging	Item Code
75	24	IM104063
110	15	IM104064
160	6	IM104065

**Bend 87.5°**

Size in mm	Std. Packaging	Item Code
75	46	IM103977
110	25	IM103978
160	9	IM103979

**Single Y With Door**

Size in mm	Std. Packaging	Item Code
75	21	IM104054
110	12	IM104056
160	6	IM104058

**Bend With Door**

Size in mm	Std. Packaging	Item Code
75	40	IM103805
110	21	IM103959
160	6	IM103961

**Double Y**

Size in mm	Std. Packaging	Item Code
75	18	IM104020
110	9	IM104021

**Single T**

Size in mm	Std. Packaging	Item Code
75	32	IM104045
110	18	IM104046
160	9	IM104047

**Double Y With Door**

Size in mm	Std. Packaging	Item Code
75	18	IM104013
110	10	IM104015

**Single T With Door**

Size in mm	Std. Packaging	Item Code
75	25	IM104034
110	15	IM104036
160	8	IM104038

**Bend 45°**

Size in mm	Std. Packaging	Item Code
75	60	IM103968
110	33	IM103969
160	7	IM103970

**Cleansing Pipe**

Size in mm	Std. Packaging	Item Code
75	39	IM103992
110	14	IM103994
160	12	IM103996



Reducer		
Size in mm	Std. Packaging	Item Code
110 X 75	51	IM104030
160 X 110	24	IM104032



Red. T With Door		
Size in mm	Std. Packaging	Item Code
160 X 110	9	IM104025



Red. T		
Size in mm	Std. Packaging	Item Code
160 X 110	9	IM104028

Aerator - RR		
Size in mm	Std. Packaging	Item Code
110	1	IM104091

## ISI - Solvent Joint Fittings

HSN Code: 3917



Coupler		
Size in mm	Std. Packaging	Item Code
40	315	IM104006
50	210	IM104007
63	116	IM104008
75	81	IM104009
110	33	IM104010
160	-	IM104011



Single T With Door		
Size in mm	Std. Packaging	Item Code
75	25	IM104040
110	14	IM104042
160	7	IM104044



Bend 87.5°		
Size in mm	Std. Packaging	Item Code
40	168	IM103980
50	96	IM103981
63	54	IM103982
75	50	IM103983
110	26	IM103984
160	10	IM103985



Single Y		
Size in mm	Std. Packaging	Item Code
75	24	IM104066
110	16	IM104067
160	-	IM104068



Bend With Door		
Size in mm	Std. Packaging	Item Code
75	39	IM103963
110	21	IM103965
160	6	IM103967



Single Y With Door		
Size in mm	Std. Packaging	Item Code
75	21	IM104060
110	12	IM104062



Single T		
Size in mm	Std. Packaging	Item Code
40	126	IM104048
50	77	IM104049
63	36	IM104050
75	32	IM104051
110	18	IM104052



Double Y		
Size in mm	Std. Packaging	Item Code
75	18	IM104022
110	9	IM104023



Double Y With Door		
Size in mm	Std. Packaging	Item Code
75	18	IM104017
110	10	IM104019



Bend 45°		
Size in mm	Std. Packaging	Item Code
40	270	IM104108
50	150	IM104109
63	-	IM104357
75	66	IM103974
110	32	IM103975
160	7	IM103976



Red. T		
Size in mm	Std. Packaging	Item Code
160 X 110	10	IM104029



Cleansing Pipe		
Size in mm	Std. Packaging	Item Code
75	42	IM103998
110	15	IM104000
160	12	IM104002

Red. T With Door		
Size in mm	Std. Packaging	Item Code
160 X 110	8	IM104027



Vent Cowl		
Size in mm	Std. Packaging	Item Code
75	200	IM104142
110	126	IM104129

Aerator - SJ		
Size in mm	Std. Packaging	Item Code
110	1	IM104092



Access/Socket Plug		
Size in mm	Std. Packaging	Item Code
75	180	IM104069
110	70	IM104070
160	36	IM104071

Aerator - RR & SJ		
Size in mm	Std. Packaging	Item Code
110	1	IM104093

Reducer		
Size in mm	Std. Packaging	Item Code
110 X 75	48	IM104031

Height Riser 6" (Ht)		
Size in mm	Std. Packaging	Item Code
110 X 50/40	-	-

Boss Connector		
Size in mm	Std. Packaging	Item Code
110 X 63	-	-

## Traps

HSN Code: 3917



Multi Floor Trap 7"		
Size in mm	Std. Packaging	Item Code
110	18	IM104111



P Trap		
Size in mm	Std. Packaging	Item Code
110 X 110	12	IM103988
125 X 110	-	IM103990

Bracket Clamp		
Size in inch	Std. Packaging	Item Code
2 1/2	200	IT100642
4	121	IT100643

# ULTRAFIT™

SWR Systems  
With World Class Seals



Ultrafit SWR piping systems is an effective solution for Soil, Waste and Rainwater. They have varied application across commercial, industrial, housing & public sector. Our continuous focus towards quality and customer feedback helps us provide innovative SWR solutions in the market. Now with World Class Seals, Ultrafit ensures a leak proof joint and long lasting performance.

Pipes as per  
IS: 13592



Fittings as per  
IS: 14735



## Pipes

## Rubber Ring Joint

HSN Code: 3917



### Single Socket

Size in mm	6 mtr.		3 mtr.		6 ft.	
	Item Code		Item Code		Item Code	
	Type A	Type B	Type A	Type B	Type A	Type B
75	IM203316	IM203346	IM203308	IM203338	IM203381	IM203410
90	IM203317	IM203347	IM203309	IM203339	IM203382	IM203411
110	IM203318	IM203348	IM203310	IM203340	IM203383	IM203412
160	IM203319	IM203349	IM203311	IM203341	-	-

### Double Socket

Size in mm	6 mtr.		3 mtr.		6 ft.	
	Item Code		Item Code		Item Code	
	Type A	Type B	Type A	Type B	Type A	Type B
75	IM203320	IM203350	IM203312	IM203342	IM203385	IM203414
90	IM203321	IM203351	IM203313	IM203343	IM203386	IM203415
110	IM203322	IM203352	IM203314	IM203344	IM203387	IM203416
160	IM203323	IM203353	IM203315	IM203345	-	-

### Double Socket

Size in mm	4 ft.		3 ft.		2 ft.	
	Item Code		Item Code		Item Code	
	Type A	Type B	Type A	Type B	Type A	Type B
75	IM203389	IM203418	IM203393	IM203422	IM203397	IM203426
90	IM203390	IM203419	IM203394	IM203423	IM203398	IM203427
110	IM203391	IM203420	IM203395	IM203424	IM203399	IM203428

### Single Socket (3.6 mtr.) (12 ft.)

Size in mm	Type A	Type B
	Item Code	Item Code
75	IM203369	IM203372
90	IM203370	IM203373
110	IM203371	IM203374

**Pipes**
**Solvent Joint**
**HSN Code: 3917**

Single Socket						
Size in mm	6 mtr.		3 mtr.		6 ft.	
	Item Code		Item Code		Item Code	
	Type A	Type B	Type A	Type B	Type A	Type B
50	-	-	-	IM204086	-	-
75	IM203332	IM203362	IM203324	IM203354	IM203469	IM203430
90	IM203333	IM203363	IM203325	IM203355	IM203470	IM203472
110	IM203334	IM203364	IM203326	IM203356	IM203471	IM203431
160	IM203335	IM203365	IM203327	IM203357	-	-
200	-	-	IM203583	IM203584	-	-

Double Socket						
Size in mm	6 mtr.		3 mtr.		6 ft.	
	Item Code		Item Code		Item Code	
	Type A	Type B	Type A	Type B	Type A	Type B
75	IM203336	IM203366	IM203328	IM203358	IM203401	IM203432
90	IM203466	IM203468	IM203329	IM203359	IM203473	IM203474
110	IM203337	IM203367	IM203330	IM203360	IM203402	IM203433
160	IM203467	IM203368	IM203331	IM203361	-	-

Double Socket						
Size in mm	4 ft.		3 ft.		2 ft.	
	Item Code		Item Code		Item Code	
	Type A	Type B	Type A	Type B	Type A	Type B
75	IM203475	IM203434	IM203404	IM203438	IM203407	IM203442
90	IM203476	IM203435	IM203405	IM203439	IM203408	IM203443
110	IM203403	IM203436	IM203406	IM203440	IM203409	IM203444

Single Socket 6 KG. (3 mtr.)		
Size in mm	Std. Packaging	Item Code
40	35	IM203580
50	20	IM203581
63	1	IM203582

Single Socket HP (3 mtr.)		
Size in mm	Std. Packaging	Item Code
40	50	IM203578
50	12	IM203579

Royal RR (3 mtr.)	
Size in mm	Item Code
75	IM203577
110	IM203576

## Fittings With World Class Seals - ISI

HSN Code: 3917



Coupler		
Size in mm	Std. Packaging	Item Code
75	105	IM103375
90	52	IM103377
110	48	IM103376



Double T		
Size in mm	Std. Packaging	Item Code
75	34	IM103378
90	24	IM103380
110	15	IM103379



Bend 87.5°		
Size in mm	Std. Packaging	Item Code
75	81	IM103365
90	38	IM103366
110	34	IM103367
160	8	IM103368



Double T With Door		
Size in mm	Std. Packaging	Item Code
75	28	IM103381
90	18	IM103385
110	8	IM103383



Bend With Door		
Size in mm	Std. Packaging	Item Code
75	64	IM103354
90	48	IM103358
110	27	IM103356
160	8	IM103360



Single Y		
Size in mm	Std. Packaging	Item Code
75	41	IM103421
90	28	IM103424
110	18	IM103422
160	6	IM103423



Single T		
Size in mm	Std. Packaging	Item Code
75	54	IM103409
90	34	IM103410
110	20	IM103411
160	8	IM103412



Single Y With Door		
Size in mm	Std. Packaging	Item Code
75	38	IM103413
90	24	IM103415
110	15	IM103417
160	4	IM103419



Single T With Door		
Size in mm	Std. Packaging	Item Code
75	40	IM103401
90	26	IM103403
110	15	IM103405
160	8	IM103407



Double Y		
Size in mm	Std. Packaging	Item Code
75	27	IM103392
110	12	IM103391



Single T With RH Door		
Size in mm	Std. Packaging	Item Code
110	15	IM103592



Double Y With Door		
Size in mm	Std. Packaging	Item Code
75	18	IM103388
110	6	IM103390



Single T With LH Door		
Size in mm	Std. Packaging	Item Code
110	15	IM103594



Bend 45°		
Size in mm	Std. Packaging	Item Code
75	40	IM103362
90	45	IM103363
110	30	IM103364
160	12	IM103361



Cleansing Pipe		
Size in mm	Std. Packaging	Item Code
75	49	IM103369
110	24	IM103371
160	8	IM103373



Reducing Y With Door		
Size in mm	Std. Packaging	Item Code
160 X 110	6	IM103396



Access/ Socket Plug*		
Size in mm	Std. Packaging	Item Code
75	60	IM103349
110	45	IM103348



Reducing T		
Size in mm	Std. Packaging	Item Code
160 X 75	10	IM103752
160 X 110	9	IM103395



Reducer		
Size in mm	Std. Packaging	Item Code
110 X 75	48	IM103398
110 X 90	48	IM103399



Reducing T With Door		
Size in mm	Std. Packaging	Item Code
160 X 110	8	IM103393



Reducing Y		
Size in mm	Std. Packaging	Item Code
160 X 110	6	IM103400



Horn Bend With Door		
Size in mm	Std. Packaging	Item Code
110 X 50	22	IM103590

## Solvent Joint Fittings - ISI

HSN Code: 3917



Coupler		
Size in mm	Std. Packaging	Item Code
75	120	IM103318
90	44	IM103304
110	52	IM103271



Single T		
Size in mm	Std. Packaging	Item Code
75	63	IM103280
90	36	IM103308
110	22	IM103281
160	8	IM103320



Bend 87.5°		
Size in mm	Std. Packaging	Item Code
75	80	IM103272
90	60	IM103305
110	36	IM103273
160	10	IM103319



Single T With Door		
Size in mm	Std. Packaging	Item Code
75	51	IM103282
90	30	IM103309
110	20	IM103302
160	6	IM103300



Bend With Door		
Size in mm	Std. Packaging	Item Code
75	60	IM103274
90	48	IM103306
110	36	IM103276
160	10	IM103278



Double T		
Size in mm	Std. Packaging	Item Code
75	42	IM103321
90	24	IM103315
110	16	IM103322

\*It Would be supplied Non-ISI-Item





Double T With Door		
Size in mm	Std. Packaging	Item Code
75	30	IM103323
90	20	IM103316
110	12	IM103325



Vent Cowl		
Size in mm	Std. Packaging	Item Code
63	270	IM103291
75	180	IM103292
90	135	IM103314
110	132	IM103293
160	88	IM103343



Single Y		
Size in mm	Std. Packaging	Item Code
75	36	IM103284
90	30	IM103311
110	12	IM103285
160	6	IM103286



Vent Cowl With Jali		
Size in mm	Std. Packaging	Item Code
63	270	IM103596
75	92	IM103597
90	60	IM103599
110	48	IM103598



Single Y With Door		
Size in mm	Std. Packaging	Item Code
75	40	IM103327
90	24	IM103312
110	18	IM103287
160	6	IM103329



Vent Cowl With PVC Jali		
Size in mm	Std. Packaging	Item Code
110	99	IM104134



Double Y		
Size in mm	Std. Packaging	Item Code
75	36	IM103331
110	12	IM103332



Pipe Clip*		
Size in mm	Std. Packaging	Item Code
40	500	IM103536
50	400	IM103537
63	400	IM103533
75	300	IM103534
90	300	IM103538
110	200	IM103535
160	150	IM103539



Double Y With Door		
Size in mm	Std. Packaging	Item Code
75	24	IM103333
110	10	IM103335



Socket Plug for Height Riser*		
Size in mm	Std. Packaging	Item Code
40	600	IM103571



Bend 45°		
Size in mm	Std. Packaging	Item Code
75	82	IM103289
90	80	IM103296
110	36	IM103290
160	18	IM103295

W. C. Connector (SJ) Type A		
Size in mm	Std. Packaging	Item Code
110	1	IM203483



Cleansing Pipe		
Size in mm	Std. Packaging	Item Code
75	44	IM103337
110	26	IM103339
160	8	IM103341



Reducer		
Size in mm	Std. Packaging	Item Code
110 X 75	84	IM103344



Reducing Y		
Size in mm	Std. Packaging	Item Code
160 X 110	6	IM103294



Reducing Y With Door		
Size in mm	Std. Packaging	Item Code
160 X 110	6	IM103345



Boss Connector*		
Size in mm	Std. Packaging	Item Code
110 X 63	30	IM103567



Reducing T		
Size in mm	Std. Packaging	Item Code
160 X 110	9	IM103297
160 X 75	10	IM103755



Height Riser 6"(Ht)		
Size in mm	Std. Packaging	Item Code
110 X 75/63	16	IM103569



Reducing T With Door		
Size in mm	Std. Packaging	Item Code
160 X 110	8	IM103298



Horn Bend W/D		
Size in mm	Std. Packaging	Item Code
110 X 50	27	IM103588

## Royal Rubber Ring Joint Fittings

HSN Code: 3917



Coupler		
Size in mm	Std. Packaging	Item Code
75	80	IM103550
110	60	IM103549



Single Y		
Size in mm	Std. Packaging	Item Code
75	62	IM103565
110	24	IM103566



Bend 87.5°		
Size in mm	Std. Packaging	Item Code
75	96	IM103547
110	55	IM103548



Single Y With Door		
Size in mm	Std. Packaging	Item Code
75	48	IM103561
110	20	IM103563



Bend With Door		
Size in mm	Std. Packaging	Item Code
75	96	IM103542
110	32	IM103544



Bend 45°		
Size in mm	Std. Packaging	Item Code
75	112	IM103545
110	60	IM103546



Single T		
Size in mm	Std. Packaging	Item Code
75	96	IM103559
110	36	IM103560



W. C. Bend Con 87.5° (Lip Ring)		
Size in mm	Std. Packaging	Item Code
110	36	IM103347



Single T With Door		
Size in mm	Std. Packaging	Item Code
75	72	IM103555
110	30	IM103557



Reducing Y		
Size in mm	Std. Packaging	Item Code
110 X 75	24	IM103554

\*It Would be supplied Non-ISI-Item



Reducing T		
Size in mm	Std. Packaging	Item Code
110 X 75	36	IM103553



Aerator		
Size in mm	Std. Packaging	Item Code
110 x 75	1	IM103773



Reducing T With Door		
Size in mm	Std. Packaging	Item Code
110 X 75	34	IM103551

## Solvent Joint Fittings

HSN Code: 3917



Coupler		
Size in mm	Std. Packaging	Item Code
75	100	IM103494
110	60	IM103495



Single T With Door D/S		
Size in mm	Std. Packaging	Item Code
63	77	IM103492
75	48	IM103467
90	38	IM103498
110	30	IM103469



Bend 87.5°		
Size in mm	Std. Packaging	Item Code
75	112	IM103500
110	36	IM103501



Single Y		
Size in mm	Std. Packaging	Item Code
50	168	IM103471
63	90	IM103472
75	64	IM103473
110	20	IM103474



Bend With Door		
Size in mm	Std. Packaging	Item Code
75	88	IM103463
110	36	IM103465



Single Y With Door		
Size in mm	Std. Packaging	Item Code
50	108	IM103508
63	88	IM103510
75	48	IM103512
110	18	IM103514



Bend With Door D/S		
Size in mm	Std. Packaging	Item Code
50	150	IM103459
63	140	IM103461
75	60	IM103489
90	48	IM103496
110	36	IM103487



Bend 45°		
Size in mm	Std. Packaging	Item Code
40	400	IM103475
50	210	IM103476
63	200	IM103477
75	126	IM103478
110	60	IM103479



Single T		
Size in mm	Std. Packaging	Item Code
75	72	IM103502
110	36	IM103503



Single T With Door		
Size in mm	Std. Packaging	Item Code
75	54	IM103504
110	32	IM103506



Bend 45° D/S		
Size in mm	Std. Packaging	Item Code
63	80	IM104240
75	60	IM103765
110	30	IM103746



Door Cap		
Size in mm	Std. Packaging	Item Code
50	300	IM103584
63	300	IM103583
75	200	IM103582
90	200	IM103581
110	150	IM103580



Reducing Bush		
Size in mm	Std. Packaging	Item Code
110 X 50	120	IM103516
110 X 63	120	IM103491
110 X 75	28	IM103486



Reducing Y		
Size in mm	Std. Packaging	Item Code
110 X 50	30	IM103482
110 X 63	28	IM103481
110 X 75	28	IM103480



Strip Connector		
Size in mm	Std. Packaging	Item Code
110 X 63	54	IM103525
110 X 50	54	IM103524
110 X 40	54	IM103523



Reducing T		
Size in mm	Std. Packaging	Item Code
110 X 75	42	IM103483



Aerator SJ		
Size in mm	Std. Packaging	Item Code
110 x 75	1	IM103774



Reducing T With Door		
Size in mm	Std. Packaging	Item Code
110 X 75	30	IM103484



Aerator - RR & SJ		
Size in mm	Std. Packaging	Item Code
110 x 75	1	IM103957

## Traps And Accessories

HSN Code: 3917



Nahani Trap With Jali		
Size in mm	Std. Packaging	Item Code
110 X 63	56	IM103433
110 X 75 <sup>(ISI)</sup>	56	IM103352
110 X 90	52	IM103430
110 X 110	42	IM103427



Nahani Trap W/O Jali (One Piece) (ISI)		
Size in mm	Std. Packaging	Item Code
110 X 75	54	IM103573



Nahani Trap Without Jali		
Size in mm	Std. Packaging	Item Code
110 X 63	56	IM103432
110 X 75 <sup>(ISI)</sup>	56	IM103350
110 X 90	52	IM103429
110 X 110	42	IM103426



Multi Floor Trap 4' (Ht) With Jali With End Plug		
Size in mm	Std. Packaging	Item Code
110 X 75	37	IM103440



Nahani Trap With Jali (One Piece) (ISI)		
Size in mm	Std. Packaging	Item Code
110 X 75	54	IM103572



Multi Floor Trap 4' (Ht) W/O Jali With End Plug		
Size in mm	Std. Packaging	Item Code
110 X 75	37	IM103441



Multi Floor Trap 7' (Ht)		
Size in mm	Std. Packaging	Item Code
110 X 75	27	IM103435



Round Jali		
Size in mm	Std. Packaging	Item Code
110(4")	500	IM103574



Gully Trap With Jali		
Size in mm	Std. Packaging	Item Code
110	12	IM103445



Bell Mouth Trap		
Size in mm	Std. Packaging	Item Code
110 X 75	20	IM103526



Socket Plug For Multi Floor Trap		
Size in mm	Std. Packaging	Item Code
50	400	IM103577



P Trap		
Size in mm	Std. Packaging	Item Code
75 X 75	22	IM103449
125 X 110	18	IM103448
110 X 110	18	IM103447

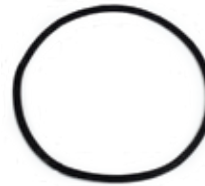
## Accessories HSN Code: 3917



Rubber Ring (Dual)		
Size in mm	Std. Packaging	Item Code
75	-	-
110	-	-
160	-	-



P Trap (Short)		
Size in mm	Std. Packaging	Item Code
110 X 110	18	IM104347



Rubber Door Gasket		
Size in mm	Std. Packaging	Item Code
50	-	-
63	-	-
75	-	-
90	-	-
110	-	-



P Trap With Lip Ring		
Size in mm	Std. Packaging	Item Code
125 X 110	17	IM103576
110 X 110	18	IM103575

## Lubricant HSN Code: 3403



Q Trap		
Size in mm	Std. Packaging	Item Code
125 X 110	18	IM103529
110 X 110	15	IM103528



Rubber Lubricant		
Size in gms	Std. Packaging	Item Code
100 gms	-	IT100500
250 gms	-	IT100501
500 gms	-	IT100502
1000 gms	-	IT100503



S Trap		
Size in mm	Std. Packaging	Item Code
125 X 110	12	IM103531
110 X 110	14	IM103530



Multi Floor Trap		
Size in mm	Std. Packaging	Item Code
110 X 75/63	27	IM103258



Floor Trap		
Size in mm	Std. Packaging	Item Code
110 X 75/63	27	IM103578

# FOAMFIT™

Underground Drainage Pipes that  
Withstands Heavy Load



Foamfit underground drainage pipes are essentially multilayer pipes which have outer and inner layers of conventional PVC and middle layer of foamed PVC. Outer and inner layers are designed to take the load and middle layer of foamed PVC gives firmness and maintains the shape of the pipe under load. This also reduces total weight of pipe and makes it light in weight when compared to solid wall PVC pipes. Foamfit pipes are manufactured as per European and International standards for drainage and sewerage.

Pipes as per  
IS: 16098



## Ringfit

HSN Code: 3917

### Single Socket (6 Mtr.)

Size in mm	SN 2	SN 4	SN 8
	Item Code	Item Code	Item Code
110	-	-	IM201271
160	IM202606	IM201268	-

### Double Socket (3 Ft.)

Size in mm	SN 2	SN 4	SN 8
	Item Code	Item Code	Item Code
110	-	IM202986	-

### Double Socket (6 Mtr.)

Size in mm	SN 2	SN 4	SN 8
	Item Code	Item Code	Item Code
110	-	-	-
160	-	-	-

### Double Socket (2 Ft.)

Size in mm	SN 2	SN 4	SN 8
	Item Code	Item Code	Item Code
110	-	IM202988	-

### Single Socket (3 Mtr.)

Size in mm	SN 2	SN 4	SN 8
	Item Code	Item Code	Item Code
110	-	IM201278	IM201272
160	IM201273	IM201270	IM201269
250	-	-	-
315	-	-	-

### Double Socket (3 Mtr.)

Size in mm	SN 2	SN 4	SN 8
	Item Code	Item Code	Item Code
110	-	-	-
160	-	-	-

### Single Socket (6 Ft.)

Size in mm	SN 2	SN 4	SN 8
	Item Code	Item Code	Item Code
110	-	IM202980	-

### Double Socket (6 Ft.)

Size in mm	SN 2	SN 4	SN 8
	Item Code	Item Code	Item Code
110	-	IM202982	-

### Double Socket (4 Ft.)

Size in mm	SN 2	SN 4	SN 8
	Item Code	Item Code	Item Code
110	-	IM202984	-

## Selfit

HSN Code: 3917

### Single Socket (6 Mtr.)

Size in mm	SN 2	SN 4	SN 8
	Item Code	Item Code	Item Code
110	-	IM201277	IM201255
160	IM201251	IM201253	IM201256
200	IM201252	IM201254	IM201257
250	-	IM203289	IM204235
315	-	IM203290	IM203585

### Single Socket (6 Ft.)

Size in mm	SN 2	SN 4	SN 8
	Item Code	Item Code	Item Code
110	-	IM202981	-

### Double Socket (6 Mtr.)

Size in mm	SN 2	SN 4	SN 8
	Item Code	Item Code	Item Code
110	-	-	-
160	-	-	-
200	-	-	-

### Double Socket (6 Ft.)

Size in mm	SN 2	SN 4	SN 8
	Item Code	Item Code	Item Code
110	-	IM202983	-

### Double Socket (4 Ft.)

Size in mm	SN 2	SN 4	SN 8
	Item Code	Item Code	Item Code
110	-	IM202985	-

### Single Socket (3 Mtr.)

Size in mm	SN 2	SN 4	SN 8
	Item Code	Item Code	Item Code
110	-	IM201280	IM201265
160	IM201260	IM201262	IM201266
200	IM201261	IM201263	IM201264
250	-	-	IM204080
315	-	-	IM204081

### Double Socket (3 Ft.)

Size in mm	SN 2	SN 4	SN 8
	Item Code	Item Code	Item Code
110	-	IM202987	-

### Double Socket (3 Mtr.)

Size in mm	SN 2	SN 4	SN 8
	Item Code	Item Code	Item Code
110	-	-	-
160	-	-	-
200	IM201267	-	-

### Double Socket (2 Ft.)

Size in mm	SN 2	SN 4	SN 8
	Item Code	Item Code	Item Code
110	-	IM202989	-

## Fittings

HSN Code: 3917

### Fabricated Coupler

Size in mm	SN 4
	Item Code
110	IM103043
160	IM103044
200	IM103045



# DRAINFIT™

## UPVC Underground Drainage Pipes & Fittings



Drainfit UPVC Underground Drainage Pipes are noticeably lighter and less expensive than any existing PVC pipe of similar stiffness and many times lighter than a concrete pipe with equivalent load carrying capacity. These pipes are interchangeable with solid wall pipes and are compatible with regular PVC fittings.

Pipes as per  
IS:15328



### Pipes

**HSN Code: 3917**

Underground Drainage Pipes (6 Mtr.) Rubber Ring Joint			
Size in mm	S 25 /SN 2 / SDR 51	S 20 /SN 4 / SDR 41	S 16.5 /SN 8 / SDR 34
	Item Code	Item Code	Item Code
110	-	-	IM203799
160	-	IM202950	IM202974
200	-	IM203287	IM200973
250	IM200969	IM200972	IM200974
315	IM200970	IM202651	IM202955
400	IM200971	-	-

Underground Drainage Pipes (6 Mtr.) Solvent Joint			
Size in mm	S 25 /SN 2 / SDR 51	S 20 /SN 4 / SDR 41	S 16.5 /SN 8 / SDR 34
	Item Code	Item Code	Item Code
110	-	-	IM200965
160	IM200950	IM200955	IM200960
200	IM200951	IM200956	IM200961
250	IM200952	IM200957	IM200962
315	IM200953	IM200958	IM200963
400	IM200954	IM200959	IM200964

Underground Drainage Pipes (3 Mtr.) Solvent Joint	
Size in mm	S 20 /SN 4 / SDR 41
	Item Code
160	IM204052
200	IM204053

## Rubber Ring Joint Fittings

HSN Code: 3917



Coupler		
Size in mm	Std. Packaging	Item Code
110	48	IM104184
160	21	IM104192



Bend 87.5°		
Size in mm	Std. Packaging	Item Code
110	26	IM104182
160	11	IM104190



Single T		
Size in mm	Std. Packaging	Item Code
110	20	IM104185
160	8	IM104193

Single Y		
Size in mm	Std. Packaging	Item Code
110	16	IM104186
160	6	IM104194



Bend 45°		
Size in mm	Std. Packaging	Item Code
110	30	IM104183
160	14	IM104191



Cleansing Pipe		
Size in mm	Std. Packaging	Item Code
110	24	IM104189
160	10	IM104225

Reducer		
Size in mm	Std. Packaging	Item Code
160 x 110	27	IM104196

Red. T		
Size in mm	Std. Packaging	Item Code
160 x 110	9	IM104195

## Solvent Joint Fittings

HSN Code: 3917

Coupler		
Size in mm	Std. Packaging	Item Code
110	52	IM104426
160	18	IM104427

Bend 87.5°		
Size in mm	Std. Packaging	Item Code
110	26	IM104218
160	11	IM104387



Single T		
Size in mm	Std. Packaging	Item Code
110	18	IM104220
160	8	IM104223



Single Y		
Size in mm	Std. Packaging	Item Code
110	16	IM104221
160	6	IM104224

Bend 45°		
Size in mm	Std. Packaging	Item Code
110	39	IM104219
160	14	IM104388



Cleansing Pipe		
Size in mm	Std. Packaging	Item Code
110	24	IM104222
160	11	IM104226

Reducer		
Size in mm	Std. Packaging	Item Code
160 x 110	27	IM104228

Red. T		
Size in mm	Std. Packaging	Item Code
160 x 110	9	IM104227

# CORFIT®

Underground Double Wall  
Corrugated Pipes



Corfit Underground Double Wall Corrugated Pipes are manufactured as per IS 16098 (Part-2), have a smooth internal surface and corrugated external surface. The corrugated external surface provides greater stiffness, withstands soil movement & takes higher loads (static & dynamic), whereas the internal surface helps in smooth flow of sewerage.

## Pipes

HSN Code: 3917

Underground Double Wall Corrugated Pipes (6 Mtr.)		
Size in mm	SN 4	SN 8
	Item Code	Item Code
100	IM204122	IM204125
150	IM204123	IM203801
170	-	IM204126
200	IM203710	IM203714
250	IM203809	IM203810
300	IM203711	IM203715
400	IM203712	IM203716
500	IM203713	IM203717

Coupler		
Size in mm	Std. Packaging	Item Code
100	48	IM104428
150	14	IM104430

IS:16098-2



# AQUAFIT<sup>®</sup>

## Agriculture Piping Systems



Aquafit Agriculture Piping Systems are made from highest grade quality resin. These pipes & fittings are mainly used for water supply in agriculture, drip irrigation & sprinkler lines as well as for drinking water distribution. However, these can also be used in cable ducting, ventilation pipe lines & slurry lines etc.

Pipes as per  
IS:4985



Fittings as per  
IS:7834



## Agri Pipes

HSN Code: 3917



### Agri (ISI) Pipes

Size in mm	2.5 kg/Cm <sup>2</sup> (Class 1)		4 kg/Cm <sup>2</sup> (Class 2)		6 kg/Cm <sup>2</sup> (Class 3)	
	Item Code		Item Code		Item Code	
	6 mtr	3 mtr	6 mtr	3 mtr	6 mtr	3 mtr
20	-	-	-	-	-	-
25	-	-	-	-	-	-
32	-	-	-	-	-	-
40	-	-	-	-	IM200122	IM200107
50	-	-	-	-	IM200123	IM200108
63	-	-	IM200094	IM200076	IM200124	IM200109
75	-	-	IM200095	IM200077	IM200125	-
90	IM200066	-	IM200096	IM200078	IM200126	IM200110
110	IM200067	IM200058	IM200097	IM200079	IM200127	IM200111
125	-	-	IM200098	-	IM200128	-
140	IM200068	IM200059	IM200099	IM200080	IM200129	-
160	IM200069	IM200060	IM200100	IM200081	IM200130	IM200112
180	IM200070	IM200061	IM200101	IM200082	IM200131	IM200113
200	IM200071	IM200062	IM200102	IM200083	IM200132	-
225	IM200072	IM200231	IM200103	IM200084	IM200133	-
250	IM200073	IM200254	IM200104	IM200085	IM200134	IM200114
280	-	-	IM200105	-	IM200135	-
315	IM200074	-	IM200106	IM200086	IM200136	-
355	IM200270	-	IM200271	-	IM200272	-
400	IM200273	-	IM200274	-	IM200275	-

### Agri (ISI) Pipes

Size in mm	8 kg/Cm <sup>2</sup> (Class 4)		10 kg/Cm <sup>2</sup> (Class 5)		12.5 kg/Cm <sup>2</sup> (Class 5)	
	Item Code		Item Code		Item Code	
	6 mtr	3 mtr	6 mtr	3 mtr	6 mtr	3 mtr
20	-	-	IM200041	IM200026	IM202758	-
25	IM200188	-	IM200042	IM200027	IM202759	-
32	IM200189	-	IM200043	IM200233	IM202760	-
40	IM200190	-	IM200044	-	IM202761	-
50	IM200191	-	IM200045	IM200028	IM202762	-
63	IM200192	-	IM200046	IM204089	-	-
75	IM200193	-	IM200047	IM200029	-	-
90	IM200194	-	IM200048	IM204090	-	-
110	IM200195	-	IM200049	IM200030	-	-
125	IM200196	-	-	-	-	-
140	IM200197	-	IM200050	-	-	-
160	IM200198	-	IM200051	IM200031	-	-
180	IM200199	-	IM200052	-	-	-
200	IM200200	-	IM200053	-	-	-
225	IM200201	-	IM200054	-	-	-
250	IM200202	-	IM200055	IM200263	-	-
280	-	-	IM200056	-	-	-
315	IM203163	-	IM200261	-	-	-
355	-	-	-	-	-	-
400	-	-	-	-	-	-

### High Pressure Pipes - ISI

Size in mm	Std. Packaging	Item Code
20	45	IM200018
25	30	IM200019
32	20	IM200020
40	15	IM200021
50	12	IM200022

## Agri Fittings

HSN Code: 3917



### Coupler Conceal (10Kg)

Size in mm	Std. Packaging	Item Code
20 (ISI)	1500	IM100129
25 (ISI)	900	IM100130
32 (ISI)	500	IM100131



### Coupler LW

Size in mm	Std. Packaging	Item Code
40	500	IM100186
50	336	IM100187
63	180	IM100188
75	100	IM100189
90	90	IM100190
110	60	IM100191
140	24	IM100192
160	24	IM100193
200	10	IM100194
250	8	IM100195



### Coupler (10Kg)

Size in mm	Std. Packaging	Item Code
40 (ISI)	400	IM100132
50 (ISI)	220	IM100133
63 (ISI)	120	IM100134
75 (ISI)	70	IM100135
90 (ISI)	40	IM100136



### Coupler Prestige

Size in mm	Std. Packaging	Item Code
63	216	IM100529
75	160	IM100530
90	144	IM100531
110	80	IM100532



### Coupler Heavy

Size in mm	Std. Packaging	Item Code
63 (ISI)	120	IM100137
75 (ISI)	100	IM100138
90 (ISI)	90	IM100139
110 (ISI)	60	IM100140
140 (ISI)	20	IM100141
160 (ISI)	12	IM100142



### Elbow Conceal (10kg)

Size in mm	Std. Packaging	Item Code
20 (ISI)	1000	IM100147
25 (ISI)	500	IM100148
32 (ISI)	350	IM100149



### Coupler PN 10

Size in mm	Std. Packaging	Item Code
20	1700	IM100550
25	1100	IM100551
32	600	IM100552



### Elbow (10Kg)

Size in mm	Std. Packaging	Item Code
50 (ISI)	120	IM100143
63 (ISI)	60	IM100144
75 (ISI)	40	IM100145
90 (ISI)	20	IM100146



Elbow Heavy		
Size in mm	Std. Packaging	Item Code
40 (ISI)	230	IM100150
50 (ISI)	140	IM100151
63 (ISI)	70	IM100152
75 (ISI)	40	IM100153
90 (ISI)	32	IM100154
110 (ISI)	22	IM100155



Elbow Prestige		
Size in mm	Std. Packaging	Item Code
63	184	IM100533
75	132	IM100534
90	75	IM100535
110	39	IM100536
160	12	IM100537

Elbow 45° PN 16		
Size in mm	Std. Packaging	Item Code
32	275	IM104422
25	500	IM104421



Tee Conceal (10Kg)		
Size in mm	Std. Packaging	Item Code
20 (ISI)	650	IM100171
25 (ISI)	400	IM100172
32 (ISI)	200	IM100173



Elbow PN 10		
Size in mm	Std. Packaging	Item Code
20	1200	IM100553
25	650	IM100554
32	400	IM100555
110	20	IM100556



Tee (10Kg)		
Size in mm	Std. Packaging	Item Code
63 (ISI)	40	IM100168
75 (ISI)	30	IM100169
90 (ISI)	15	IM100170



Elbow PN 6		
Size in mm	Std. Packaging	Item Code
40	250	IM100559
63	70	IM100560
75	40	IM100561
90	30	IM100562
110	20	IM100563
140	10	IM100521
160	8	IM100564
180	4	IM100565



Tee Heavy		
Size in mm	Std. Packaging	Item Code
40 (ISI)	150	IM100174
50 (ISI)	80	IM100175
63 (ISI)	66	IM100176
75 (ISI)	40	IM100177
90 (ISI)	28	IM100178
110 (ISI)	12	IM100179
140 (ISI)	8	IM100180
160 (ISI)	4	IM100181



Elbow (4Kg)		
Size in mm	Std. Packaging	Item Code
90 (ISI)	42	IM100182
110 (ISI)	36	IM100183



Tee (4Kg)		
Size in mm	Std. Packaging	Item Code
90 (ISI)	28	IM100184
110 (ISI)	20	IM100185



Elbow LW		
Size in mm	Std. Packaging	Item Code
40	330	IM100196
50	160	IM100197
63	153	IM100198
75	96	IM100199
90	60	IM100200
110	36	IM100201
140	19	IM100202
160	10	IM100203
200	4	IM100204
250	4	IM100205



Tee PN 10		
Size in mm	Std. Packaging	Item Code
20	700	IM100578
25	500	IM100579
32	250	IM100580
110	12	IM100581



Tee PN 6		
Size in mm	Std. Packaging	Item Code
40	150	IM100583
63	40	IM100584
75	30	IM100585
90	24	IM100586
110	12	IM100587
180	2	IM100588
250	2	IM100504



End Cap LW Collar		
Size in mm	Std. Packaging	Item Code
75	168	IM100591
90	156	IM100590
110	90	IM100573



Tee LW		
Size in mm	Std. Packaging	Item Code
40	224	IM100215
50	163	IM100216
63	111	IM100217
75	72	IM100218
90	42	IM100219
110	26	IM100220
140	16	IM100221
160	8	IM100222
200	4	IM100223



End Cap LW		
Size in mm	Std. Packaging	Item Code
63	316	IM100566
75	200	IM100567
90	180	IM100568
110	100	IM100569
125	60	IM100570
140	48	IM100576
160	40	IM100571
180	30	IM100577
200	21	IM100572



Tee Prestige		
Size in mm	Std. Packaging	Item Code
63	140	IM100538
75	90	IM100539
90	54	IM100540
110	28	IM100541
160	8	IM100542



End Cap Threaded		
Size in mm	Std. Packaging	Item Code
20	1000	IM100232
25	900	IM100233
32	600	IM100234
40	300	IM100235
50	200	IM100236
63	200	IM100237
75	100	IM100238
90	100	IM100239
110	60	IM100240
140	30	IM100241
160	32	IM100242



End Cap HY		
Size in mm	Std. Packaging	Item Code
20 (ISI)	1200	IM100156
25 (ISI)	1000	IM100157
32 (ISI)	800	IM100158
40 (ISI)	400	IM100159
50 (ISI)	250	IM100160
63 (ISI)	200	IM100161
75 (ISI)	150	IM100162
90 (ISI)	80	IM100163
110 (ISI)	50	IM100164
140	20	IM100165
160	20	IM100166
200	10	IM100167
225	16	IM100574
250	6	IM100575



End Cap Threaded (Square threads)		
Size in mm	Std. Packaging	Item Code
110	58	IM100477
160	20	IM100499



M. T. A.		
Size in mm	Std. Packaging	Item Code
20	1300	IM100265
25	1100	IM100266
32	600	IM100267
40	380	IM100268
50	200	IM100269
63	150	IM100270
75	100	IM100271
90	78	IM100272
110	34	IM100273





M. T. A. Heavy		
Size in mm	Std. Packaging	Item Code
20	1200	IM100512
25	1100	IM100513
32	600	IM100514
40	380	IM100515
50	180	IM100516
63	140	IM100517
75	90	IM100518
90	72	IM100519
110	30	IM100520
140	24	IM100274
160	8	IM100275



Flange Threaded		
Size in mm	Std. Packaging	Item Code
50	40	IM100258
63	40	IM100259
75	40	IM100260
90	40	IM100261



Service Saddle		
Size in mm	Std. Packaging	Item Code
40 X 25	100	IM100388
40 X 20	100	IM100387
50 X 25	70	IM100390
50 X 20	70	IM100389
63 X 32	60	IM100393
63 X 25	60	IM100392
63 X 20	60	IM100391
75 X 32	60	IM100396
75 X 25	60	IM100395
75 X 20	60	IM100394
90 X 32	50	IM100399
90 X 25	50	IM100398
90 X 20	50	IM100397
110 X 32	40	IM100402
110 X 25	40	IM100401
110 X 20	40	IM100400
140 X 63	30	IM100408
140 X 50	30	IM100407
140 X 40	30	IM100406
140 X 32	30	IM100405
140 X 25	30	IM100404
140 X 20	30	IM100403
160 X 63	20	IM100414
160 X 50	20	IM100413
160 X 40	20	IM100412
160 X 32	20	IM100411
160 X 25	20	IM100410
160 X 20	20	IM100409
200 X 63	10	IM100420
200 X 50	10	IM100419
200 X 40	10	IM100418
200 X 32	10	IM100417
200 X 25	10	IM100416
200 X 20	10	IM100415



F.T.A		
Size in mm	Std. Packaging	Item Code
20	1000	IM100243
25	840	IM100244
32	500	IM100245
40	400	IM100246
50	200	IM100247
63	120	IM100248
75	70	IM100249
90	40	IM100250
110	24	IM100251
140	20	IM100252
160	12	IM100253



Tail Piece		
Size in mm	Std. Packaging	Item Code
63	150	IM100427
75	150	IM100428
90	80	IM100429
110	40	IM100430
140	22	IM100431
160	20	IM100432
200	12	IM100433



Union Agri		
Size in mm	Std. Packaging	Item Code
20	200	IM100474
25	150	IM100475
32	120	IM100476



Flange		
Size in mm	Std. Packaging	Item Code
63	100	IM100254
75	100	IM100255
90	60	IM100256
110	40	IM100257



Reducer		
Size in mm	Std. Packaging	Item Code
25 X 20	1000	IM100276
32 X 25	600	IM100278
32 X 20	1000	IM100277
40 X 32	450	IM100279
40 X 25	550	IM100500
50 X 40	250	IM100281
50 X 32	300	IM100280
63 X 50	150	IM100284
63 X 40	200	IM100283
63 X 32	200	IM100282
75 X 63	120	IM100287
75 X 50	126	IM100286
75 X 40	120	IM100285
75 X 32	130	IM100498
90 X 75	60	IM100292
90 X 75(LW)	96	IM100206
90 X 63	72	IM100291
90 X 50	60	IM100290
90 X 40	60	IM100289
90 X 32	60	IM100288
110 X 90	40	IM100297
110 X 75	40	IM100296
110 X 63	40	IM100295
110 X 50	40	IM100294
110 X 40	40	IM100293
140 X 110	36	IM100300
140 X 90	36	IM100298
160 X 140	24	IM100302
160 X 110	24	IM100301
160 X 90	24	IM100299
200 X 160	10	IM100305
200 X 140	10	IM100304
200 X 110	10	IM100303
250 X 200	8	IM100501
250 X 160	8	IM100502
250 X 110	8	IM100503



Reducing Bush		
Size in mm	Std. Packaging	Item Code
25 X 20	1000	IM100306
32 X 25	800	IM100308
32 X 20	800	IM100307
40 X 32	600	IM100309
50 X 40	500	IM100313
50 X 32	300	IM100312
50 X 25	300	IM100311
50 X 20	300	IM100310
63 X 50	200	IM100315
63 X 40	250	IM100314
75 X 63	150	IM100319
75 X 50	150	IM100318
75 X 40	150	IM100317
75 X 32	150	IM100316
90 X 75	80	IM100321
90 X 63	100	IM100320
110 X 90	60	IM100323
110 X 75	54	IM100325
110 X 63	52	IM100324
110 X 50	50	IM100322
140 X 110	20	IM100326
160 X 140	10	IM100327
160 X 110	10	IM100328



Reducing Tee		
Size in mm	Std. Packaging	Item Code
25 X 20	400	IM100360
32 X 20	250	IM100361
32 X 25	250	IM100362
40 X 20	170	IM100363
40 X 25	160	IM100364
40 X 32	150	IM100365
50 X 25	120	IM100366
50 X 32	110	IM100367
50 X 40	100	IM100368
63 X 20	60	IM100369
63 X 25	60	IM100370
63 X 32	70	IM100371
63 X 40	60	IM100372
63 X 50	60	IM100373
75 X 40	30	IM100374
75 X 50	30	IM100375
75 X 63	30	IM100376
90 X 50	20	IM100377
90 X 63	20	IM100378
90 X 75	20	IM100379
110 X 50	10	IM100380
110 X 63	10	IM100381
110 X 75	12	IM100382
110 X 90	14	IM100383
140 X 75	18	IM100384
140 X 90	18	IM100385
140 X 110	16	IM100386
160 X 63	10	IM100207



Reducing Tee		
Size in mm	Std. Packaging	Item Code
160 X 75	10	IM100208
160 X 90	10	IM100209
160 X 110	10	IM100210
160 X 140	8	IM100211
200 X 110	5	IM100212
200 X 140	4	IM100213
200 X 160	4	IM100214
250 X 110	2	IM100510
250 X 160	2	IM100508
250 X 200	2	IM100505



Reducing Elbow		
Size in mm	Std. Packaging	Item Code
25 X 20	500	IM100329
32 X 20	350	IM100330
32 X 25	350	IM100331
63 X 50	50	IM100332
75 X 63	40	IM100333
90 X 63	48	IM100527
90 X 75	24	IM100334
110 X 63	54	IM100528
110 X 90	30	IM100522
160 X 110	12	IM100524



Four Way Tee		
Size in mm	Std. Packaging	Item Code
63 X 32	60	IM100262
63 X 40	60	IM100263
63 X 50	60	IM100264
75 X 63	30	IM100526
75 X 75	30	IM100525



Threaded Elbow		
Size in mm	Std. Packaging	Item Code
20 X 20	1000	IM100434
25 X 20	500	IM100435
25 X 25	500	IM100436
32 X 20	250	IM100437
32 X 25	250	IM100438
32 X 32	250	IM100439
50 X 50	100	IM100440
63 X 50	50	IM100441
63 X 63	76	IM100442
75 X 63	40	IM100443
75 X 75	40	IM100444
90 X 75	24	IM100445
90 X 90	30	IM100446



Reducing F. T. A		
Size in mm	Std. Packaging	Item Code
25 X 20	1000	IM100335
32 X 20	600	IM100336
32 X 25	600	IM100337
40 X 25	300	IM100338
40 X 32	300	IM100339
50 X 40	200	IM100340
63 X 50	100	IM100341
75 X 50	70	IM100342
75 X 63	70	IM100343
90 X 50	40	IM100344
90 X 63	40	IM100345
90 X 75	40	IM100346
110 X 50	20	IM100347
110 X 63	20	IM100348
110 X 75	20	IM100349
110 X 90	20	IM100350
140 X 63	20	IM100351
140 X 75	20	IM100352
140 X 90	20	IM100353
140 X 110	20	IM100354



Threaded Tee		
Size in mm	Std. Packaging	Item Code
20 X 20	800	IM100447
25 X 20	300	IM100448
25 X 25	300	IM100449
32 X 20	250	IM100450
32 X 25	250	IM100451
32 X 32	200	IM100452
40 X 25	100	IM100453
40 X 32	100	IM100454
50 X 32	70	IM100455
63 X 20	60	IM100456
63 X 25	60	IM100457
63 X 32	60	IM100458
63 X 50	40	IM100459
63 X 63	40	IM100460
75 X 40	30	IM100461
75 X 50	30	IM100462
75 X 63	30	IM100463
75 X 75	30	IM100464
90 X 50	20	IM100465
90 X 63	20	IM100466
90 X 75	20	IM100467
90 X 90	20	IM100468
110 X 50	12	IM100469
110 X 63	12	IM100470
110 X 75	12	IM100471
110 X 90	12	IM100472
110 X 110	12	IM100473



Reducing M. T. A		
Size in mm	Std. Packaging	Item Code
75 X 50	100	IM100356
75 X 63	100	IM100357
90 X 63	60	IM100358
90 X 75	60	IM100359

## Brass Insert Fittings

HSN Code: 3917



Female Threaded Adaptor		
Size in mm	Std. Packaging	Item Code
25 X 1/2"	250	IM100592
32 X 1/2"	250	IM103024



Female Threaded Elbow		
Size in mm	Std. Packaging	Item Code
25 X 1/2"	250	IM100593
32 X 1/2"	250	IM103025



Female Threaded Tee		
Size in mm	Std. Packaging	Item Code
25 X 1/2"	175	IM100594
32 X 1/2"	175	IM103026

## Accessories

HSN Code: 3917



Fabricated Bend (10 Kg.)		
Size in mm	Std. Packaging	Item Code
20	1000	IM100001
25	600	IM100002
32	500	IM100003
40	350	IM100004
50	200	IM100005
63	100	IM100006
75	70	IM100007
90	40	IM100008
110	20	IM100009
140	10	IM100010
160	6	IM100011
200	3	IM100081



Fabricated Bend (6 Kg.)		
Size in mm	Std. Packaging	Item Code
40	350	IM100020
50	200	IM100021
63	100	IM100022
75	70	IM100023
90	40	IM100024
110	20	IM100025
140	10	IM100026
160	6	IM100027
180	5	IM100122
200	3	IM100028



Fabricated Bend (4 Kg.)		
Size in mm	Std. Packaging	Item Code
63	100	IM100012
75	70	IM100013
90	40	IM100014
110	20	IM100015
140	10	IM100016
160	6	IM100017
180	5	IM100018
200	3	IM100019



Fabricated Coupler (10 Kg.)		
Size in mm	Std. Packaging	Item Code
75	200	IM100029
90	120	IM100030
110	100	IM100031
140	20	IM100032
160	20	IM100033
200	15	IM100034



Fabricated Coupler (6 Kg.)		
Size in mm	Std. Packaging	Item Code
63	200	IM100046
75	200	IM100047
90	120	IM100048
110	100	IM100049
140	20	IM100050
160	20	IM100051
180	20	IM100052
200	15	IM100053
225	12	IM100054
250	8	IM100055
315	4	IM100056



Fabricated Coupler (4 Kg.)		
Size in mm	Std. Packaging	Item Code
63	200	IM100035
75	200	IM100036
90	120	IM100037
110	100	IM100038
140	20	IM100039
160	20	IM100040
180	20	IM100041
200	15	IM100042
225	12	IM100043
250	8	IM100044
315	4	IM100045



Repair Coupler 6" (6 Kg.)		
Size in mm	Std. Packaging	Item Code
63	30	IM100065
75	30	IM100066
90	25	IM100067
110	20	IM100068
140	15	IM100069
160	15	IM100070
180	10	IM100071
200	8	IM100072

## PVC Pipe Adhesive HSN Code: 3506



Tube		
Size in ml	Std. Packaging	Item Code
25ml	380	IM101749
50ml	250	IM101750
100ml	165	IM101751



Repair Coupler 9" (6 Kg.)		
Size in mm	Std. Packaging	Item Code
63	30	IM100073
75	20	IM100074
90	20	IM100075
110	15	IM100076
140	12	IM100077
160	10	IM100078
180	6	IM100079
200	6	IM100080



Bottle		
Size in ml / ltr	Std. Packaging	Item Code
25ml	360	IM101753
50ml	240	IM101754
100ml	176	IM101755
250ml	96	IM101756
500ml	48	IM101757
1 Litre	24	IM101758



Repair Coupler 12" (6 Kg.)		
Size in mm	Std. Packaging	Item Code
63	30	IM100057
75	25	IM100058
90	20	IM100059
110	12	IM100060
140	8	IM100061
160	7	IM100062
180	5	IM100063
200	4	IM100064



Tin		
Size in ml / ltr	Std. Packaging	Item Code
50ml	360	IM102775
100ml	144	IM102776
250ml	96	IM102777
500ml	48	IM102778
1 Litre	24	IM102779



Can		
Size in ltr	Std. Packaging	Item Code
5 Litres	6	IM101759



## Compact PVC Ball Valve HSN Code: 8481

Size in mm	Std. Packaging	Item Code	
		Plain	Threaded
20 (1/2")	200	IT100506	IT100515
25 (3/4")	120	IT100507	IT100516
32 (1")	84	IT100508	IT100517
40 (1 1/4")	56	IT100509	IT100518
50 (1 1/2")	36	IT100510	IT100519
63 (2")	15	IT100511	IT100520
75 (2 1/2")	12	IT100512	IT100521
90 (3")	6	IT100513	IT100522
110 (4")	3	IT100514	IT100523

# SAFELIT<sup>®</sup>

## Borewell Systems for Groundwater Extraction



Safelit Borewell piping system consists of Casing, Plain Screen, Ribbed Screen and Column Pipes. submersible rising main pipes are used for borewell applications. They are manufactured from high quality PVC compound. The smooth finish surface ensures minimum water friction. These pipes are most economical for installation and transportation. Due to its high tensile strength, it can withstand high impact and are optimal for the desired application. These pipes are light weight, easy to handle & install.

Pipes as per  
IS:12818



## HSN Code: 3917

Ribbed Screen Pipes				
Size in mm	Size in inch	Slot in mm	Mtr.	Item code
40	1 1/2	0.2	2	IM200853
			3	IM200860
50	2	0.2	2	IM200849
			3	IM200861
		0.5	2	IM200930
			3	IM200929
80	3	0.2	2	IM200850
			3	IM200855
		0.5	3	IM200911
			3	IM200912
100	4	0.2	2	IM200851
			3	IM200856
		0.5	2	IM200913
			3	IM200909
		0.75	2	IM200910
			3	IM200914
		1	3	IM200915
			125	5
0.5	3	IM200857		
0.75	3	IM200916		
150	6	0.2	3	IM200648
			3	IM200926
		0.5	2	IM200852
			3	IM200859
		1	3	IM200917
175	7	0.2	3	IM200923
			3	IM200925
		1	3	IM200894
200	8	0.2	3	IM200662
			3	IM200928
		1	3	IM200858
250	10	0.75	3	IM200944
			3	IM200945

Plain Screen Pipes - CM				
Size in mm	Size in inch	Slot in mm	Mtr.	Item code
100	4	0.2	2	IM200833
			3	IM200837
		1	3	IM200905
125	5	0.2	3	IM200669
		0.5	3	IM200838
150	6	0.2	3	IM200676
			3	IM200839
		0.5	3	IM202615
175	7	0.75	3	IM200931
		0.5	3	IM202616
200	8	0.2	3	IM200683
			3	IM200927
		1	3	IM200840
			3	IM200907
250	10	0.2	3	IM200690
			3	IM200843
		1	3	IM200908

Plain Screen Pipes - CS				
Size in mm	Size in inch	Slot in mm	Mtr.	Item code
100	4	0.2	3	IM200845
125	5	0.5	3	IM200935
150	6	0.2	3	IM200704
		0.75	3	IM200869
		1.5	3	IM200918
175	7	1	3	IM200846
200	8	0.2	3	IM200711
			3	IM200899
250	10	0.2	3	IM200718
			3	IM200940
		1	3	IM200941

**Casing Pipes - CM**

Size in mm	Size in inch	Std. Pkg.	Item Code	
			3 Mtr.	6 Mtr.
32	1 1/4	26	IM200557	-
40	1 1/2	20	IM200558	IM200568
50	2	14	IM200559	IM200569
80	3	7	IM200560	IM200570
100	4	5	IM200561	IM200571
115	4 1/2	-	IM200562	-
125	5	-	IM200563	-
150	6	-	IM200564	-
175	7	-	IM200565	-
200	8	-	IM200566	-
250	10	-	IM200567	-

**Casing Pipes - CS**

Size in mm	Size in inch	Std. Pkg.	Item Code	
			3 Mtr.	6 Mtr.
100	4	5	IM200574	-
125	5	-	IM200575	-
150	6	-	IM200576	IM200580
175	7	-	IM200577	IM200581
200	8	-	IM200578	-
250	10	-	IM200579	-

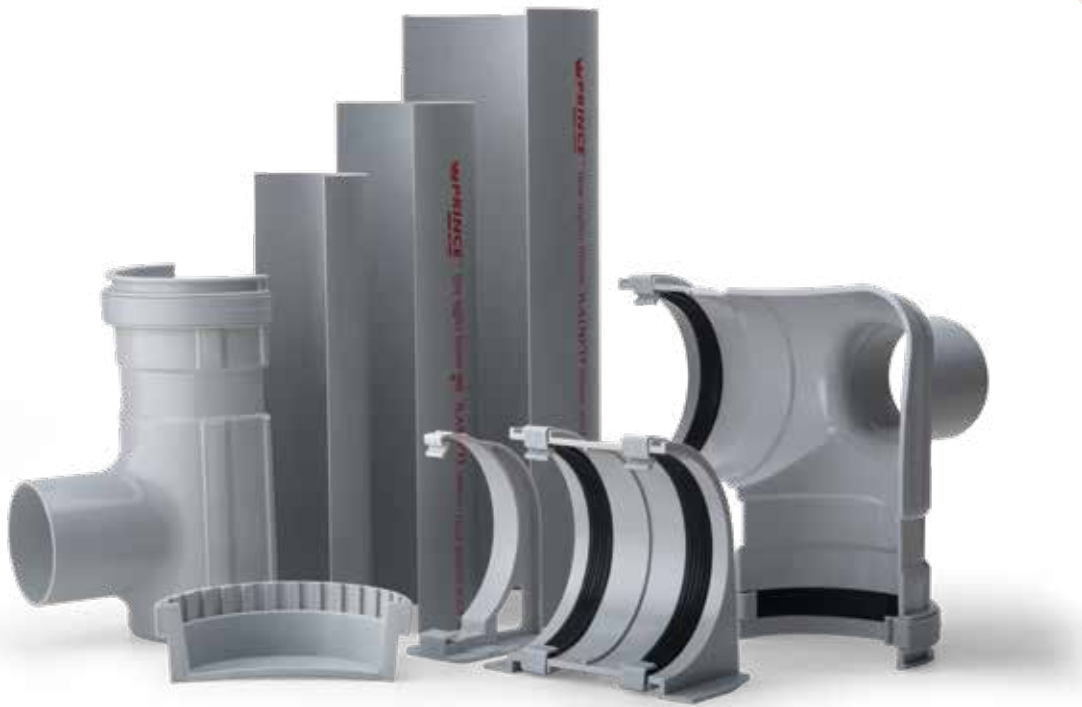
**Rising Main Pipes**
**Bell Form**

Size in mm	Size in inch	Std. Pkg.	V4	Medium	Standard	Heavy	V4
			Item Code	Item Code	Item Code	Item Code	Item Code
25	1	28	IM200727	IM200728	IM200729	-	IM200826
32	1 1/4	20	IM200730	IM200731	IM200732	IM200733	IM200824
40	1 1/2	16	IM200734	IM200735	IM200736	IM200737	-
50	2	12	-	IM200738	IM200739	IM200740	-
65	2 1/2	8	-	IM200741	IM200742	IM200743	-
80	3	6	-	IM200744	IM200745	IM200746	-
100	4	4	-	IM200747	IM200748	IM200749	-



# RAINFIT™

Roofwater Systems for  
Collection and Disposal



Rainfit - Roofwater Systems are used for collection & disposal of rainwater. The collected rainwater can be directed to storage destinations like pits, borewells, shafts and wells to augment the water level. The inert property of the material used in the making of PVC pipes helps it to not support bacterial and fungal growth.

## PIPES



**HSN Code: 3917**

### Half Round Pipes (2.5kgs/cm<sup>2</sup>)

Size in mm	Std. Pkg.		Item Code	
	3 mtr	6 mtr	3 mtr	6mtr
140	32	16	IM201426	IM201429
180	20	10	IM201427	IM201430
250	5	-	IM201428	-



### Short Stop End

Size in mm	Std. Packaging	Item Code
140	130	IM101054
180	72	IM101055
250	30	IM101056



### Stop End Outlet (With 2 Clamps)

Size in mm	Std. Packaging	Item Code
140	24	IM101060
180	15	IM101061
250	4	IM101062



### Down Line Pipes

Size in mm	Std. Packaging	Item Code
75	1	IM201424
110	1	IM201425



### Support Bracket

Size in mm	Std. Packaging	Item Code
140	160	IM101063
180	100	IM101064
250	40	IM101065

## Fittings

**HSN Code: 3917**



### Joint Bracket (With 2 Clamps)

Size in mm	Std. Packaging	Item Code
140	60	IM101045
180	18	IM101046
250	12	IM101047



### Single Socket Elbow

Size in mm	Std. Packaging	Item Code
75	44	IM101057
110	32	IM101058



### Running Outlet (With 2 Clamps)

Size in mm	Std. Packaging	Item Code
140	22	IM101051
180	10	IM101052
250	5	IM101053



### Clamp

Size in mm	Std. Packaging	Item Code
140	500	IM101042
180	200	IM101043
250	100	IM101044



### 90° Elbow (Without Outlet) (With 2 Clamps)

Size in mm	Std. Packaging	Item Code
140	20	IM101036
180	10	IM101037
250	4	IM101038



### Pipe Clip

Size in mm	Std. Packaging	Item Code
75	340	IM101048
110	200	IM101049
160	120	IM101050



### 90° Elbow (With Outlet) (With 2 Clamps)

Size in mm	Std. Packaging	Item Code
140 X 75	20	IM101039
180 X 110	8	IM101040
250 X 160	4	IM101041



### Side Bracket HSN Code: 7308

Size in mm	Std. Packaging	Item Code
140	50	IT100389
180	50	IT100390
250	30	IT100391



**Top Bracket HSN Code: 7308**

Size in mm	Std. Packaging	Item Code
140	50	IT100386
180	50	IT100387
250	30	IT100388



**Rubber Seals HSN Code: 4016**

Size in mm	Std. Packaging	Item Code
75	50	IP200200
110	50	IP200201
160	30	IP200202



**Rubber Gasket HSN Code: 4016**

Size in mm	Std. Packaging	Item Code
140	378	IT100409
180	245	IT100408
250	-	IT100410

# DURAFIT™

## FRP Manhole & Chamber Covers



Rectangle



Square



Circle



Chamber Covers

Durafit Chamber & Manhole Covers with frames are light-weight & superior to the conventional cast iron, ductile iron & RCC covers. Durafit is made of FRP (Fibre Reinforced Plastic) and covers are available in various sizes with load bearing capacity from 1.5 to 40 metric tons. Durafit Manhole covers are tested as per BS EN 124 1994 for gully tops and manhole tops for vehicular & pedestrian area.

**Chamber Covers**

Size in inch	Std. Packaging	Item Code
10	-	IM101031
12	-	IM101034

**Durable Manhole Covers**

Shape	Size in mm	2.5 MT	5 MT	10 MT	20 MT	40 MT
		Item Code	Item Code	Item Code	Item Code	Item Code
Circular	500	IT100528	IT100537	IT100525	IT100531	IT100534
	560	IT100597	IT100650	-	-	-
Rectangular	600 X 450	IT100544	IT100557	IT100540	IT100549	IT100553
	900 X 450	IT100547	IT100558	IT100542	IT100551	IT100555
	900 X 600	IT100548	IT100559	IT100543	IT100552	IT100556
	1200 X 900	IT100546	-	IT100541	IT100550	IT100554
Square	300 X 300	IT100570	IT100590	IT100563	IT100577	IT100583
	450 X 450	IT100571	IT100591	IT100564	IT100578	IT100584
	600 X 600	IT100572	IT100592	IT100565	IT100579	IT100585
	750 X 750	-	-	-	-	-
	900 X 900	-	IT100593	IT100566	IT100580	IT100586
	1000 X 1000	IT100567	IT100587	IT100560	IT100574	IT100581
	1200 X 1200	IT100568	IT100588	IT100561	IT100575	IT100582
	1500 X 1500	IT100569	IT100589	IT100562	IT100576	-

## PRESTIGE PIPES



### PIPES

HSN Code: 3917

#### Agri (ISI) Pipes

Size in mm	4 kg/Cm <sup>2</sup> (Class 2)		6 kg/Cm <sup>2</sup> (Class 3)		10 kg/Cm <sup>2</sup> (Class 5)	
	Item Code		Item Code		Item Code	
	6 mtr	3 mtr	6 mtr	3 mtr	6 mtr	3 mtr
20	-	-	-	-	IM200318	-
25	-	-	-	-	IM200319	-
32	-	-	-	-	IM200320	IM200307
40	-	-	IM200367	IM200349	IM200321	-
50	-	-	IM200368	IM200350	IM200322	IM200308
63	IM200341	IM200327	IM200369	IM200351	IM200323	-
75	IM200342	IM200328	IM200370	IM200352	IM200324	-
90	IM200343	IM200329	IM200371	IM200353	IM200325	-
110	IM200344	IM200330	IM200372	IM200354	IM200326	-
125	-	-	IM200373	-	-	-
140	IM200345	-	IM200374	-	-	-
160	IM200346	IM200331	IM200375	IM200355	-	-
180	IM200347	-	IM200376	-	-	-
200	IM200348	-	IM200377	-	-	-







#### PRESTIGE HIGH PRESSURE PIPE

Size in mm	Std. Packaging	Item Code
20	1000	IM200412
25	840	IM200413
32	500	IM200414
40	400	IM200415
50	200	IM200416



# OUR NETWORK

## LEGEND

-  HEAD OFFICE
-  BRANCH OFFICES
-  MANUFACTURING UNITS
-  DEPOTS
-  UPCOMING UNITS
-  CHANNEL PARTNERS



## PRINCE PIPES AND FITTINGS LIMITED

Mfg. & Exporters of UPVC, CPVC, PPR & HDPE Pipes, Fittings & Valves

**Corp. Off.:** The Ruby, 8th Floor, 29, Senapati Bapat Marg (Tulsi Pipe Road), Dadar (W), Mumbai - 400028, Maharashtra, India.

**Customer Care:** 022-6602 2222 | F: 022-6602 2220  
E: [info@princepipes.com](mailto:info@princepipes.com) | W: [www.princepipes.com](http://www.princepipes.com)

**Branch Off:** Delhi: 011-4157 9511 | Pune: 020-2553 7339  
Ahmedabad: 079-269 34013 | Chennai: 044-2616 1899

Authorised Dealer/Distributor

